

**OVERALL FENCING
AND FIRE ACCESS PLAN**

SCALE: 1"=80'-0"



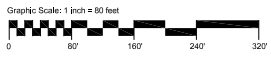
**MESA HANGARS AT
FALCON FIELD AIRPORT**
4800 E FALCON DR,
MESA, AZ 85215

HANGAR A, B, C, D, E, F

REVISION	DATE	DESCRIPTION

Project Number 7026-101
Date 12.03.19
Drawn By GMP
Checked By JF

OVERALL FENCING AND
FIRE ACCESS PLAN
SP1.0



TRASH ACCESS PLAN

SCALE: 1"=80'-0"



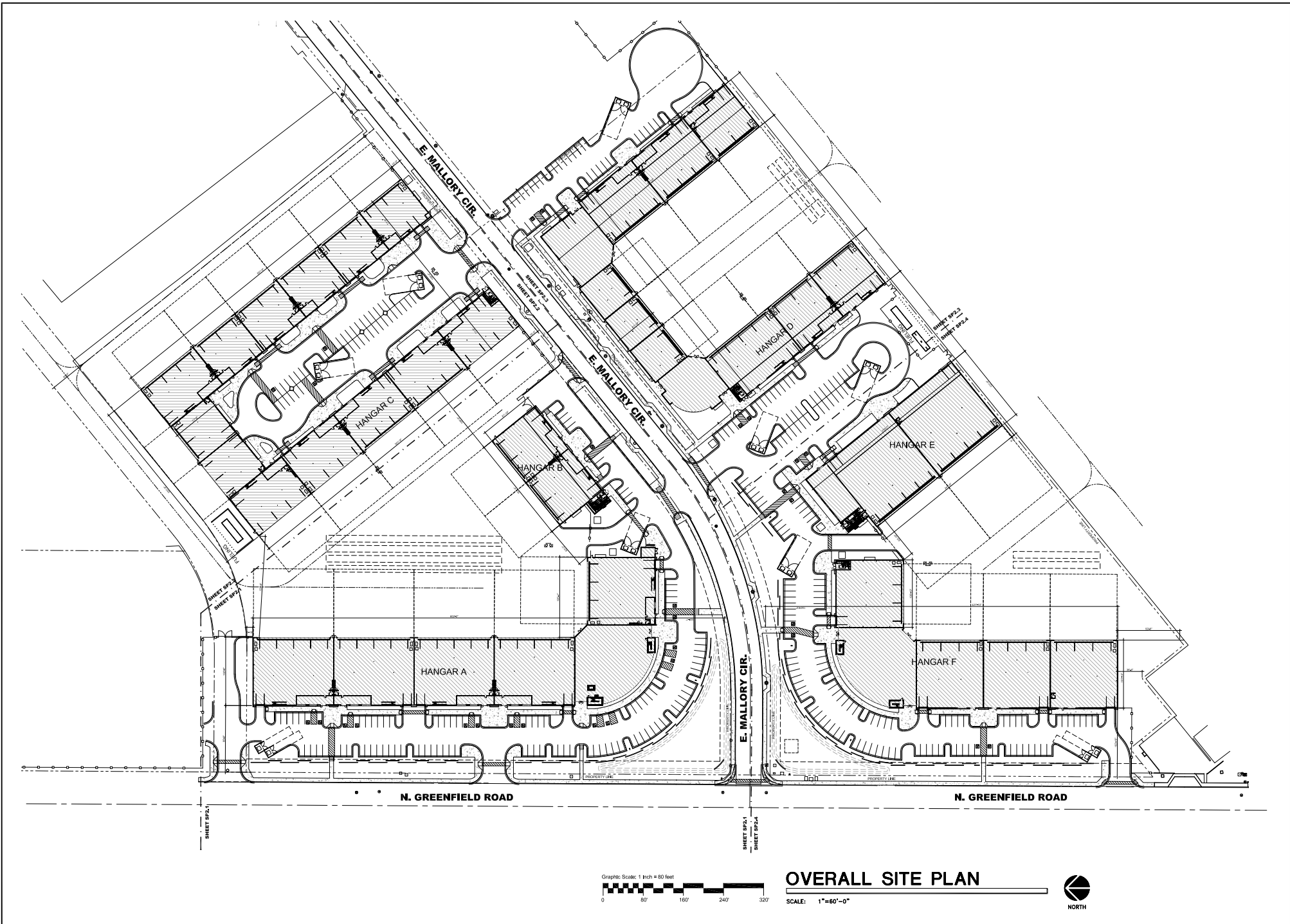
**MESA HANGARS AT
FALCON FIELD AIRPORT**
4800 E FALCON DR,
MESA, AZ 85215

HANGAR A, B, C, D, E, F

REVISION	DATE	DESCRIPTION

Project Number 7026-011
Date 12.03.19
Drawn By GMP
Checked By JF

TRASH ACCESS PLAN
SP1.1



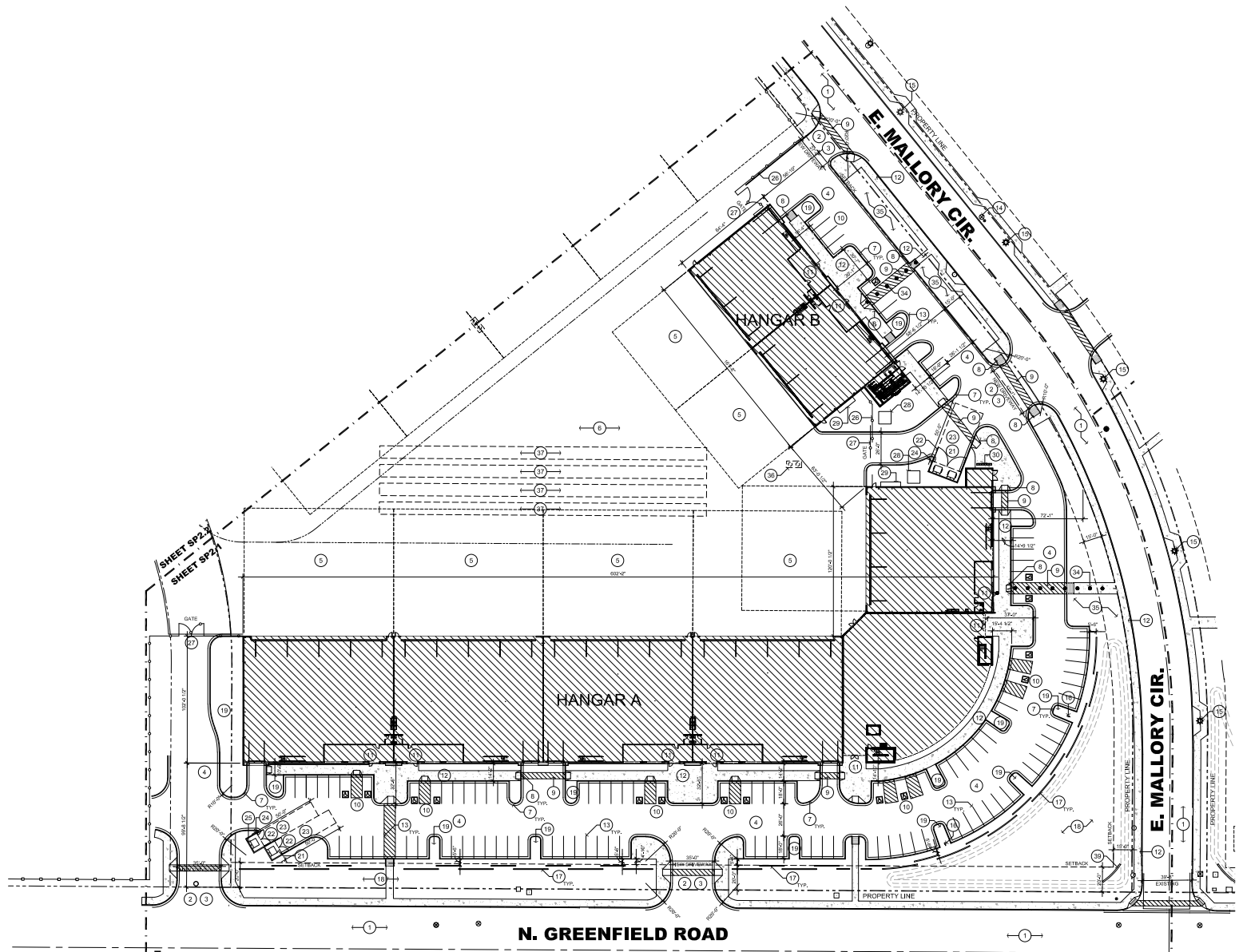
**MESA HANGARS AT
FALCON FIELD AIRPORT**
4800 E FALCON DR,
MESA, AZ 85215

HANGAR A, B, C, D, E, F

REVISION	DATE	DESCRIPTION

Project Number 7026-101
Date 12.03.19
Drawn By GMP
Checked By JF

OVERALL SITE PLAN
SP2.0

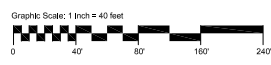


KEYNOTES:

- 1 EXISTING ROAD AND CURBS TO REMAIN
- 2 SAWCUT AND REMOVE PORTION OF EXISTING CONCRETE CURB AND CUTTER, PREP AREA FOR NEW SITE WORK - SEE CIVIL DRAWINGS
- 3 NEW CONCRETE DRIVE APRON PER CITY OF MESA DETAIL M-42 - SEE CIVIL DRAWINGS
- 4 ASPHALT PAVING, TYP. - SEE CIVIL DRAWINGS
- 5 NEW ASPHALT APRON - SEE CIVIL DRAWINGS
- 6 ASPHALT DRIVE APPROACH - SEE CIVIL DRAWINGS
- 7 CONCRETE CURB OR CURB AND GUTTER - SEE CIVIL DRAWINGS
- 8 ADA CURB RAMP
- 9 PAINTED ACCESS STRIPING AT CROSSWALK (USE TRAFFIC PAINT), STRIPING TO BE 3" IN WIDTH
- 10 ADA PARKING STALL WITH PAINTED SYMBOL, CURB STOP, AND ADA SIGNAGE
- 11 HANGER LAND SIDE MAIN ENTRY
- 12 CONCRETE SIDEWALK - CROSS SLOPE 1/50 MAX. LINE OF TRAVEL SLOPE 1/20 MAX. TO BE 3" WIDE.
- 13 PAINTED PARKING STRIPING, YELLOW - USE TRAFFIC PAINT. PAINT STRIPING TO BE 3" WIDE.
- 14 EXISTING FIRE HYDRANT TO REMAIN
- 15 EXISTING STREET LIGHTING TO REMAIN
- 16 NEW PARKING LOT LIGHTING
- 17 34" TALL PAINTED CHU SITE PARKING SCREEN WALL
- 18 LANDSCAPE AND RETENTION AREA
- 19 DECOMPOSED GRANITE LANDSCAPE PLANTER
- 20 CATCH BASIN - SEE CIVIL DRAWINGS
- 21 TRASH ENCLOSURE PER THE CITY OF MESA DETAIL M-42.02.2.
- 22 TRASH ENCLOSURE GATE
- 23 50'-0" REFUSE SERVICES CLEARANCE ZONE PER CITY OF MESA STANDARDS
- 24 8'-0" HIGH MASONRY WALL WITH 2" CHU CAP
- 25 STEEL PIPE BOLLARD, PAINTED
- 26 8'-0" TALL BLACK VINYL COATED CHAIN LINK SECURITY FENCE.
- 27 FIRE ACCESS GATE WITH KNOX BOX
- 28 ELECTRICAL TRANSFORMER - SEE ELECTRICAL DRAWINGS
- 29 ELECTRICAL S.E.S. - NEMA 4 RATED
- 30 TUBE STEEL BICYCLE RACK
- 31 DRAINAGE OUTLET AND RIP RAP
- 32 CONCRETE SPLASH BLOCK AT ROOF DRAIN OUTLET
- 33 NEW FIRE HYDRANT
- 34 ACCESSIBLE ROUTE TO PUBLIC WAY
- 35 LANDSCAPE BERM - SEE LANDSCAPE DRAWINGS
- 36 UNDERGROUND OIL/SAND INTERCEPTOR - SEE CIVIL AND PLUMBING DRAWINGS
- 37 UNDERGROUND STORAGE TANKS - SEE CIVIL DRAWINGS
- 38 NEW ADA RAMP PER CITY OF MESA STANDARD DETAIL M-44.02
- 39 NEW MONUMENT SIGN PER CITY OF MESA STANDARD DETAILS.
- 40 WORLD WAR II MONUMENT - TBD

GENERAL NOTES:

- A. PAINT FIRE LANE CURBS RED AND PLACE REFLECTORS AT 75' O.C. AT FIRE TRUCK ACCESS WHEELS WITHOUT CURBS.



ENLARGED SITE PLAN

SCALE: 1"=40'-0"



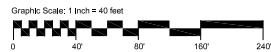
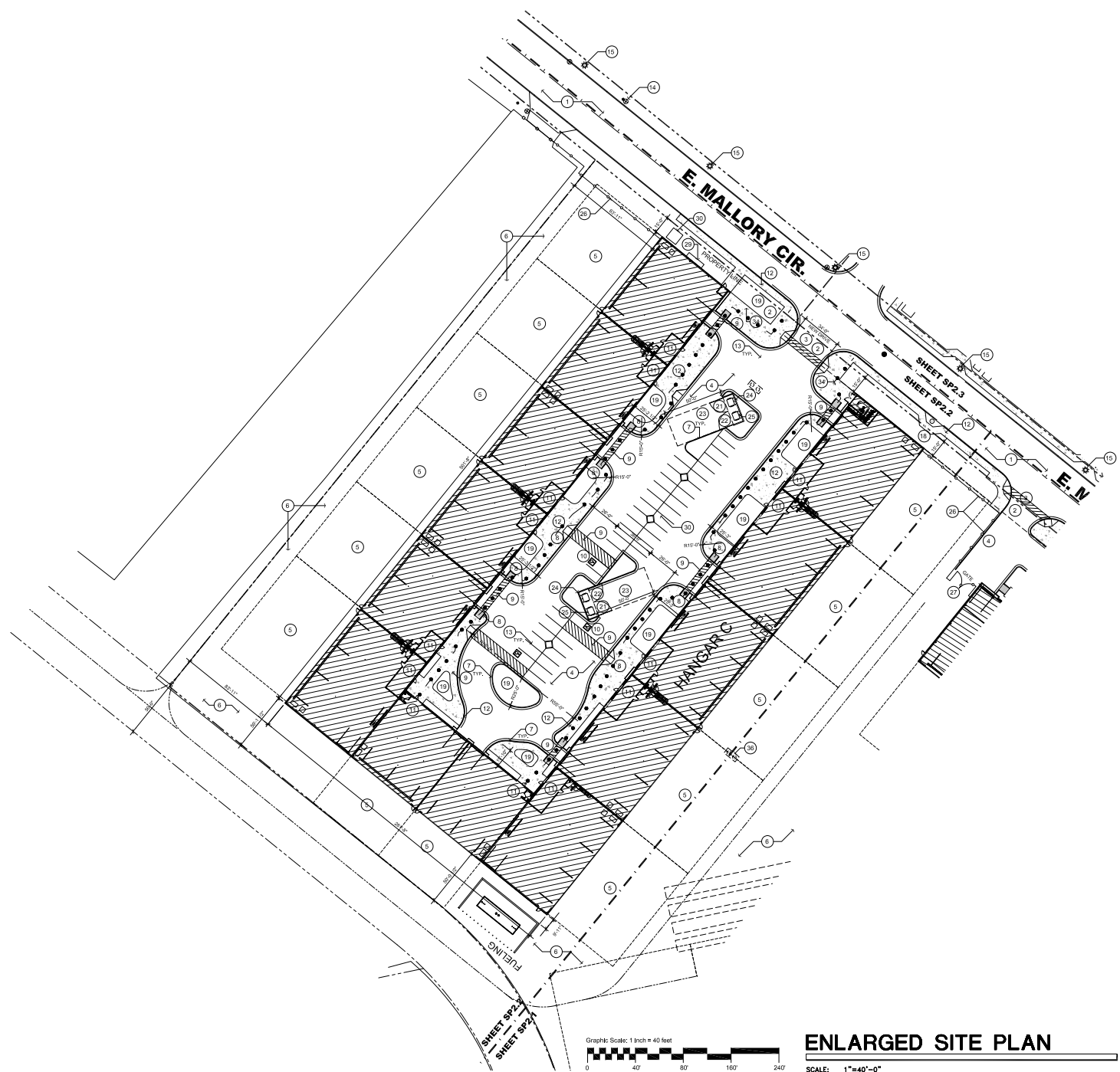
**MESA HANGARS AT
FALCON FIELD AIRPORT**
4800 E FALCON DR,
MESA, AZ 85215

HANGAR A, B, C, D, E, F

REVISION	DATE	DESCRIPTION

Project Number 7026-101
Date 12.03.19
Drawn By GMP
Checked By JF

ENLARGED SITE PLAN
HANGAR A & B
SP.2.1



ENLARGED SITE PLAN

SCALE: 1"=40'-0"



KEYNOTES:

- 1 EXISTING ROAD AND CURBS TO REMAIN
- 2 SAWCUT AND REMOVE PORTION OF EXISTING CONCRETE CURB AND CUTTER, PREP AREA FOR NEW SITE WORK - SEE CIVIL DRAWINGS
- 3 NEW CONCRETE DRIVE APRON PER CITY OF MESA DETAIL 14-42 - SEE CIVIL DRAWINGS
- 4 ASPHALT PAVING, TYP. - SEE CIVIL DRAWINGS
- 5 NEW ASPHALT APRON - SEE CIVIL DRAWINGS
- 6 ASPHALT DRIVE APPROACH - SEE CIVIL DRAWINGS
- 7 CONCRETE CURB OR CURB AND GUTTER - SEE CIVIL DRAWINGS
- 8 ADA CURB RAMP
- 9 PAINTED ACCESS STRIPING AT CROSSWALK (USE TRAFFIC PAINT) - STRIPING TO BE 3" IN WIDTH
- 10 ADA PARKING STALL WITH PAINTED SYMBOL, CURB STOP, AND ADA SIGNAGE
- 11 HANGER LAND SIDE MAIN ENTRY
- 12 CONCRETE SIDEWALK - CROSS SLOPE 1/50 MAX. LINE OF TRAVEL SLOPE 1/20 MAX.
- 13 PAINTED PARKING STRIPING, YELLOW - USE TRAFFIC PAINT, PAINT STRIPING TO BE 3" WIDE.
- 14 EXISTING FIRE HYDRANT TO REMAIN
- 15 EXISTING STREET LIGHTING TO REMAIN
- 16 NEW PARKING LOT LIGHTING
- 17 34" TALL PAINTED CHU SITE PARKING SCREEN WALL
- 18 LANDSCAPE AND RETENTION AREA
- 19 RECOMPOSED GRANITE LANDSCAPE PLANTER
- 20 CATCH BASIN - SEE CIVIL DRAWINGS
- 21 TRASH ENCLOSURE PER THE CITY OF MESA DETAIL 14-22.2.
- 22 TRASH ENCLOSURE GATE
- 23 10'-0" REFUSE SERVICES CLEARANCE ZONE PER CITY OF MESA STANDARDS
- 24 8'-0" HIGH MASONRY WALL WITH 2" CHU CAP
- 25 STEEL PIPE BOLLARD, PAINTED
- 26 8'-0" TALL BLACK VINYL COATED CHAIN LINK SECURITY FENCE.
- 27 FIRE ACCESS GATE WITH KNOX BOX
- 28 ELECTRICAL TRANSFORMER - SEE ELECTRICAL DRAWINGS
- 29 ELECTRICAL S.E.S. - NEMA 4 RATED
- 30 TUBE STEEL BICYCLE RACK
- 31 DRAINAGE OUTLET AND RIP RAP
- 32 CONCRETE SPLASH BLOCK AT ROOF DRAIN OUTLET
- 33 NEW FIRE HYDRANT
- 34 ACCESSIBLE ROUTE TO PUBLIC WAY
- 35 LANDSCAPE BERM - SEE LANDSCAPE DRAWINGS
- 36 UNDERGROUND OIL/SAND INTERCEPTOR - SEE CIVIL AND PLUMBING DRAWINGS
- 37 UNDERGROUND STORAGE TANKS - SEE CIVIL DRAWINGS
- 38 NEW ADA RAMP PER CITY OF MESA STANDARD DETAIL 14-44.02
- 39 NEW MONUMENT SIGN PER CITY OF MESA STANDARD DETAILS.
- 40 WORLD WAR II MONUMENT - TBD

GENERAL NOTES:

- A. PAINT FIRE LANE CURBS RED AND PLACE REFLECTORS AT 75' O.C. AT FIRE TRUCK ACCESSIBLES WITHOUT CURBS.



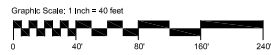
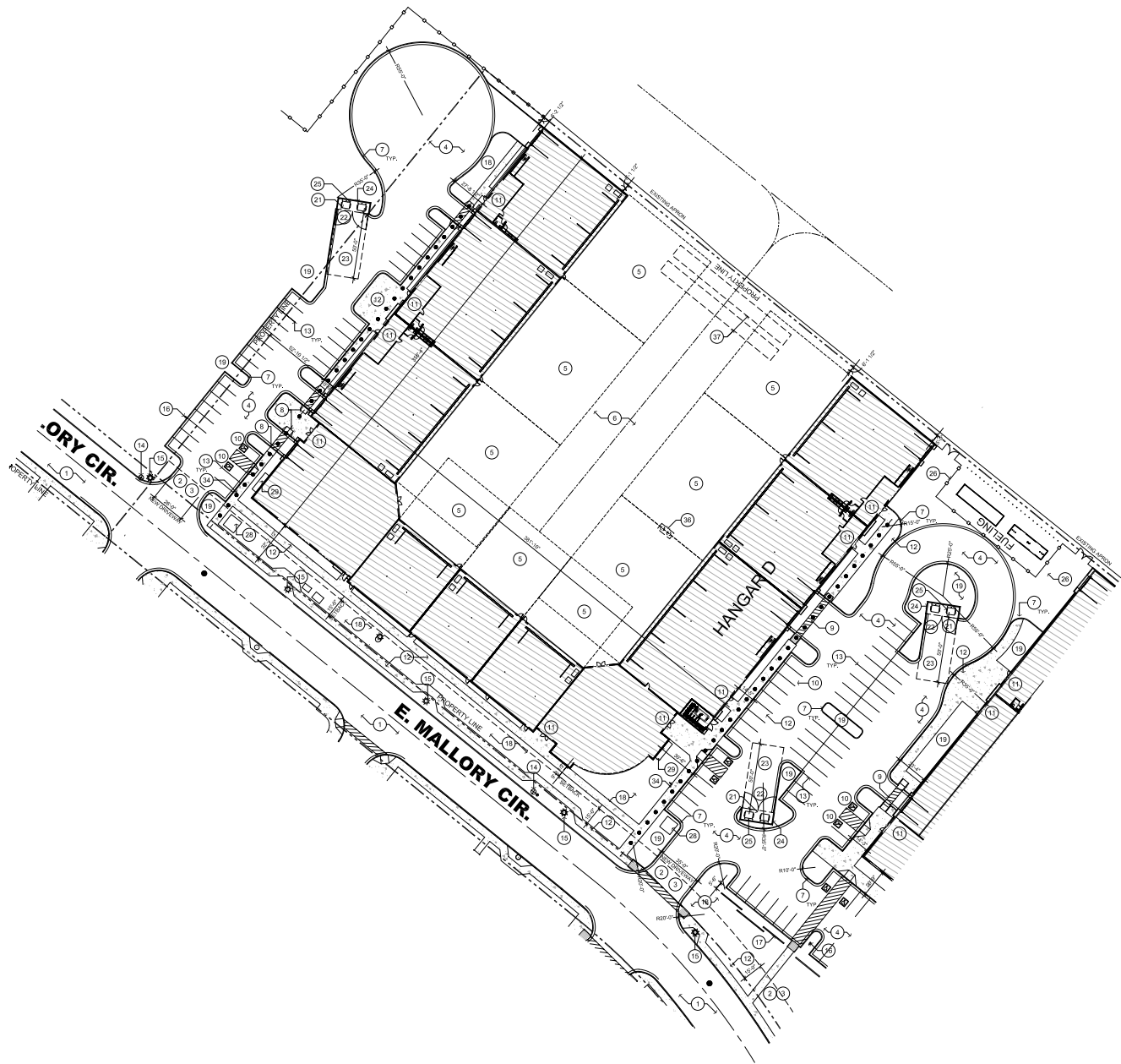
**MESA HANGARS AT
FALCON FIELD AIRPORT**
4800 E FALCON DR,
MESA, AZ 85215

HANGAR A, B, C, D, E, F

REVISION	DATE	DESCRIPTION

Project Number 7026-101	Date 12.23.19	Drawn By GMP	Checked By JF
----------------------------	------------------	-----------------	------------------

ENLARGED SITE PLAN
HANGAR C
SP2.2



ENLARGED SITE PLAN

SCALE: 1"=40'-0"



KEYNOTES:

- 1 EXISTING ROAD AND CURBS TO REMAIN
- 2 SAWCUT AND REMOVE PORTION OF EXISTING CONCRETE CURB AND CUTTER, PREP AREA FOR NEW SITE WORK - SEE CIVIL DRAWINGS
- 3 NEW CONCRETE DRIVE APRON PER CITY OF MESA DETAIL 14-42 - SEE CIVIL DRAWINGS
- 4 ASPHALT PAVING, TYP. - SEE CIVIL DRAWINGS
- 5 NEW ASPHALT APRON - SEE CIVIL DRAWINGS
- 6 ASPHALT DRIVE APPROACH - SEE CIVIL DRAWINGS
- 7 CONCRETE CURB OR CURB AND GUTTER - SEE CIVIL DRAWINGS
- 8 ADA CURB RAMP
- 9 PAINTED ACCESS STRIPING AT CROSSWALK (USE TRAFFIC PAINT) - STRIPING TO BE 3" IN WIDTH
- 10 ADA PARKING STALL WITH PAINTED SYMBOL, CURB STOP, AND ADA SIGNAGE
- 11 HANGER LAND SIDE MAIN ENTRY
- 12 CONCRETE SIDEWALK - CROSS SLOPE 1/50 MAX. LINE OF TRAVEL SLOPE 1/20 MAX.
- 13 PAINTED PARKING STRIPING, YELLOW - USE TRAFFIC PAINT, PAINT STRIPING TO BE 3" WIDE
- 14 EXISTING FIRE HYDRANT TO REMAIN
- 15 EXISTING STREET LIGHTING TO REMAIN
- 16 NEW PARKING LOT LIGHTING
- 17 34" TALL PAINTED CHU SITE PARKING SCREEN WALL
- 18 LANDSCAPE AND RETENTION AREA
- 19 DECOMPOSED GRANITE LANDSCAPE PLANTER
- 20 CATCH BASIN - SEE CIVIL DRAWINGS
- 21 TRASH ENCLOSURE PER THE CITY OF MESA DETAIL 14-22.2.2.
- 22 TRASH ENCLOSURE GATE
- 23 50'-0" REFUSE SERVICES CLEARANCE ZONE PER CITY OF MESA STANDARDS
- 24 8'-0" HIGH MASONRY WALL WITH 2" CHU CAP
- 25 STEEL PIPE BOLLARD, PAINTED
- 26 8'-0" TALL BLACK VINYL COATED CHAIN LINK SECURITY FENCE.
- 27 FIRE ACCESS GATE WITH KNOX BOX
- 28 ELECTRICAL TRANSFORMER - SEE ELECTRICAL DRAWINGS
- 29 ELECTRICAL S.E.S. - NEMA 4 RATED
- 30 TUBE STEEL BICYCLE RACK
- 31 DRAINAGE OUTLET AND RIP RAP
- 32 CONCRETE SPLASH BLOCK AT ROOF DRAIN OUTLET
- 33 NEW FIRE HYDRANT
- 34 ACCESSIBLE ROUTE TO PUBLIC WAY
- 35 LANDSCAPE BERM - SEE LANDSCAPE DRAWINGS
- 36 UNDERGROUND OIL/SAND INTERCEPTOR - SEE CIVIL AND PLUMBING DRAWINGS
- 37 UNDERGROUND STORAGE TANKS - SEE CIVIL DRAWINGS
- 38 NEW ADA RAMP PER CITY OF MESA STANDARD DETAIL 14-44.0.2
- 39 NEW MONUMENT SIGN PER CITY OF MESA STANDARD DETAILS.
- 40 WORLD WAR II MONUMENT - TBD

GENERAL NOTES:

- A. PAINT FIRE LANE CURBS RED AND PLACE REFLECTORS AT 75' O.C. AT FIRE TRUCK ACCESSIBLES WITHOUT CURBS.

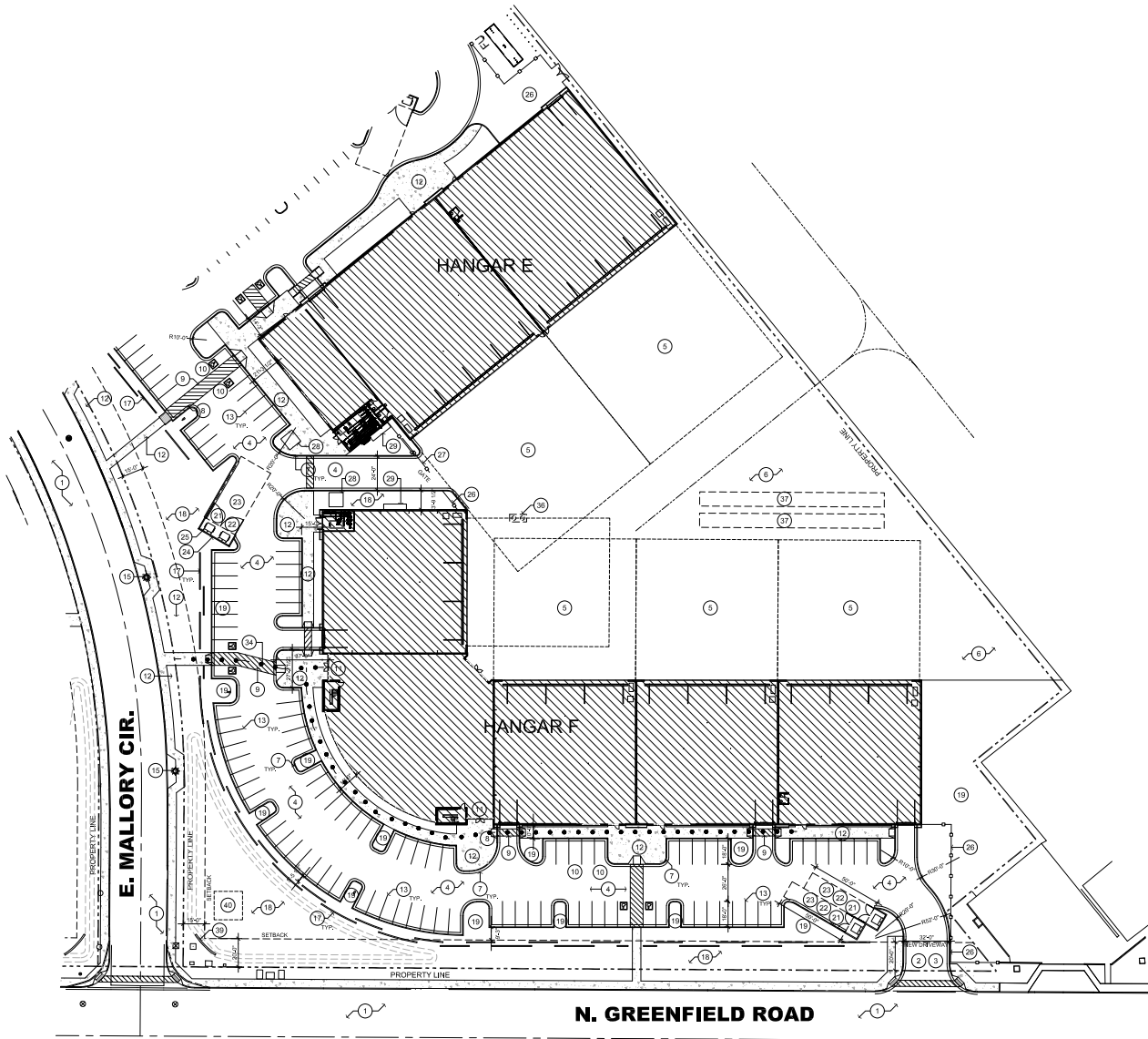


MESA HANGARS AT
 FALCON FIELD AIRPORT
 4800 E FALCON DR,
 MESA, AZ 85215
 HANGAR A, B, C, D, E, F

REVISION	DATE	DESCRIPTION

Project Number 7026-101	Date 12.23.19	Drawn By GMP	Checked By JF
----------------------------	------------------	-----------------	------------------

ENLARGED SITE PLAN
 HANGAR D
 SP2.3

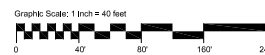


KEYNOTES:

- 1 EXISTING ROAD AND CURBS TO REMAIN
- 2 SAWCUT AND REMOVE PORTION OF EXISTING CONCRETE CURB AND CUTTER, PREP AREA FOR NEW SITE WORK - SEE CIVIL DRAWINGS
- 3 NEW CONCRETE DRIVE APRON PER CITY OF MESA DETAIL 14-42 - SEE CIVIL DRAWINGS
- 4 ASPHALT PAVING, TYP. - SEE CIVIL DRAWINGS
- 5 NEW ASPHALT APRON - SEE CIVIL DRAWINGS
- 6 ASPHALT DRIVE APPROACH - SEE CIVIL DRAWINGS
- 7 CONCRETE CURB OR CURB AND GUTTER - SEE CIVIL DRAWINGS
- 8 ADA CURB RAMP
- 9 PAINTED ACCESS STRIPING AT CROSSWALK (USE TRAFFIC PAINT) - STRIPING TO BE 3" IN WIDTH
- 10 ADA PARKING STALL WITH PAINTED SYMBOL, CURB STOP, AND ADA SIGNAGE
- 11 HANGER LAND SIDE MAIN ENTRY
- 12 CONCRETE SIDEWALK - CROSS SLOPE 1/50 MAX. LINE OF TRAVEL SLOPE 1/20 MAX.
- 13 PAINTED PARKING STRIPING, YELLOW - USE TRAFFIC PAINT, PAINT STRIPING TO BE 3" WIDE
- 14 EXISTING FIRE HYDRANT TO REMAIN
- 15 EXISTING STREET LIGHTING TO REMAIN
- 16 NEW PARKING LOT LIGHTING
- 17 34" TALL PAINTED CHU SITE PARKING SCREEN WALL
- 18 LANDSCAPE AND RETENTION AREA
- 19 RECOMPOSED GRANITE LANDSCAPE PLANTER
- 20 CATCH BASIN - SEE CIVIL DRAWINGS
- 21 TRASH ENCLOSURE PER THE CITY OF MESA DETAIL 14-202.2.
- 22 TRASH ENCLOSURE GATE
- 23 10'-0" REFUSE SERVICES CLEARANCE ZONE PER CITY OF MESA STANDARDS
- 24 8'-0" HIGH MASONRY WALL WITH 2" CHU CAP
- 25 STEEL PIPE BOLLARD, PAINTED
- 26 8'-0" TALL BLACK VINYL COATED CHAIN LINK SECURITY FENCE.
- 27 FIRE ACCESS GATE WITH KNOX BOX
- 28 ELECTRICAL TRANSFORMER - SEE ELECTRICAL DRAWINGS
- 29 ELECTRICAL S.E.S. - NEMA 4 RATED
- 30 TUBE STEEL BICYCLE RACK
- 31 DRAINAGE OUTLET AND RIP RAP
- 32 CONCRETE SPLASH BLOCK AT ROOF DRAIN OUTLET
- 33 NEW FIRE HYDRANT
- 34 ACCESSIBLE ROUTE TO PUBLIC WAY
- 35 LANDSCAPE BERM - SEE LANDSCAPE DRAWINGS
- 36 UNDERGROUND OIL/SAND INTERCEPTOR - SEE CIVIL AND PLUMBING DRAWINGS
- 37 UNDERGROUND STORAGE TANKS - SEE CIVIL DRAWINGS
- 38 NEW ADA RAMP PER CITY OF MESA STANDARD DETAIL 14-44.02
- 39 NEW MONUMENT SIGN PER CITY OF MESA STANDARD DETAILS.
- 40 WORLD WAR II MONUMENT - TBD

GENERAL NOTES:

- A. PAINT FIRE LANE CURBS RED AND PLACE REFLECTORS AT 75' O.C. AT FIRE TRUCK ACCESSIBLES WITHOUT CURBS.



ENLARGED SITE PLAN

SCALE: 1" = 40'-0"



MESA HANGARS AT
 FALCON FIELD AIRPORT
 4800 E FALCON DR,
 MESA, AZ 85215
 HANGAR A, B, C, D, E, F

REVISION	DATE	DESCRIPTION

Project Number 7026-101
Date 12.03.19
Drawn By GMP
Checked By JF

ENLARGED SITE PLAN
 HANGAR E & F
 SP.2.4

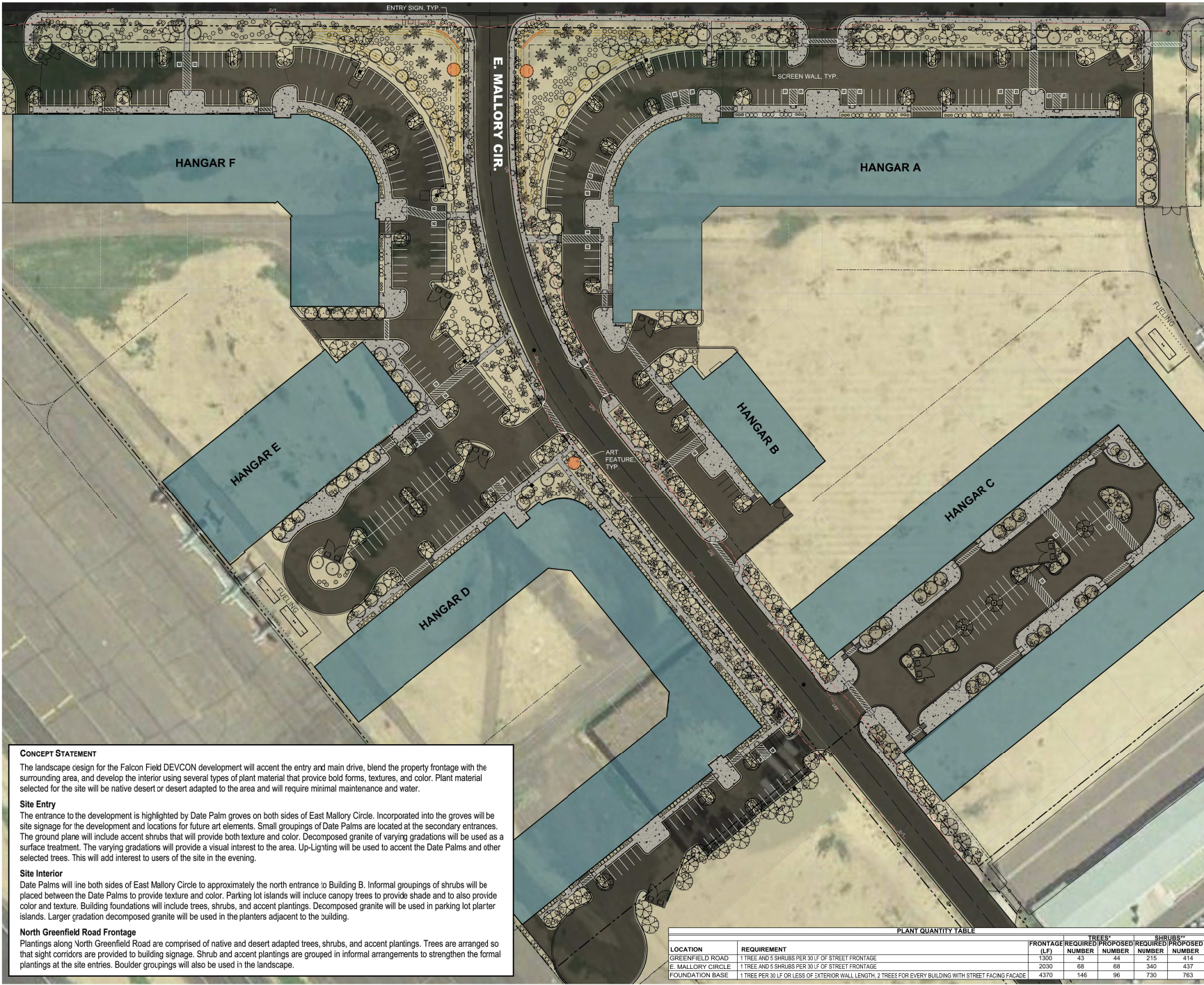
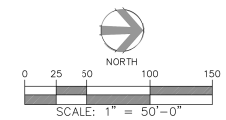


**FALCON FIELD (PARCELS 53,56 & 57)
 LANDSCAPE CONCEPT PLAN**

LANDSCAPE SCHEDULE

SYMBOL	BOTANICAL NAME	COMMON NAME
TREES (LARGE) - 36" BOX		
	PARKINSONIA HYBRID	PALO VERDE HYBRID
	PTHECELLOBIUM	TEXAS EBONY
	PROSOPIS SP.	MESQUITE
TREES (SMALL) - 24" BOX		
	ACACIA WILLARDIANA	FALO BLANCO
	SOPHORA SECUNDIFLORA	TEXAS MOUNTAIN LAURAL
PALMS - 16" CLEAR TRUNK MIN.		
	PHOENIX DACTYLIFERA (MALLE)	DATE PALM, NON-FRUITING
SHRUBS - 5 GAL.		
	BUDDLEJA MARRUBIFOLIA	WOOLY BUTTERFLY BUSH
	CALLIANDRA CALIFORNICA	BAJA FAIRY DUSTER
	ENCELIA FARINOSA	BRITTLEBUSH
	EREMOPHILA VARIETY	EMU BUSH
	ERICAMERIA LARICIFOLIA	TURPINTINE BUSH
	HESPERALOE PARVIFLORA	RED HESPERALOE
	HESPERALOE FUNIFERA	GIANT HESPERALOE
	JUSTICIA SPICIGERA	MEXICAN HONEYSUCKLE
	LEUCOPHYLLUM VARIETY	SAGE
	SALVIA CLEVELANDII	CHAPARRAL SAGE
CACTI ACCENTS - 5 GAL.		
	AGAVE DESMETTIANA	SMOOTH AGAVE
	ASCLEPIAS SUBULATA	DESERT MILKWEEED
	ECHINOCACTUS GRUSONII	GOLDEN BARREL CACTUS
	EUPHORBIA ANTISYPHILITICA	CANDELLILLA
CACTI ACCENTS SMALL - 1 GAL.		
	AGAVE VICTORIA 'COMPACTA'	COMPACT QUEEN VICTORIA AGAVE
	ALOE 'BLUF ELF'	BLUE ELF ALOE
GROUNDCOVERS - 1 GAL.		
	BAILEYA MULTIRADIATA	DESERT MARIGOLD
	HYMENOXYS ACAULIS	ANGELITA DAISY
	SPHAGNETICOLA TRILOBATA	YELLOW DOT WEDELIA
INERT MATERIALS - 3' X 4' AVERAGE SIZE		
	BOULDERS	
	POTENTIAL ART INSTALLATION LOCATION	

- NOTES**
1. Frontage landscape has been developed to meet City of Mesa - Zoning Ordinance Chapter 33 Landscaping.
 2. Interior landscape has been developed to meet City of Mesa - Falcon Field Airport Planned Area Development Design Standards.
 3. Date Palms identified for the project will be specified to be non-flowering/male variety.
 4. Date Palms are to be regularly maintained to ensure minimal palm frond litter.



PLANT QUANTITY TABLE

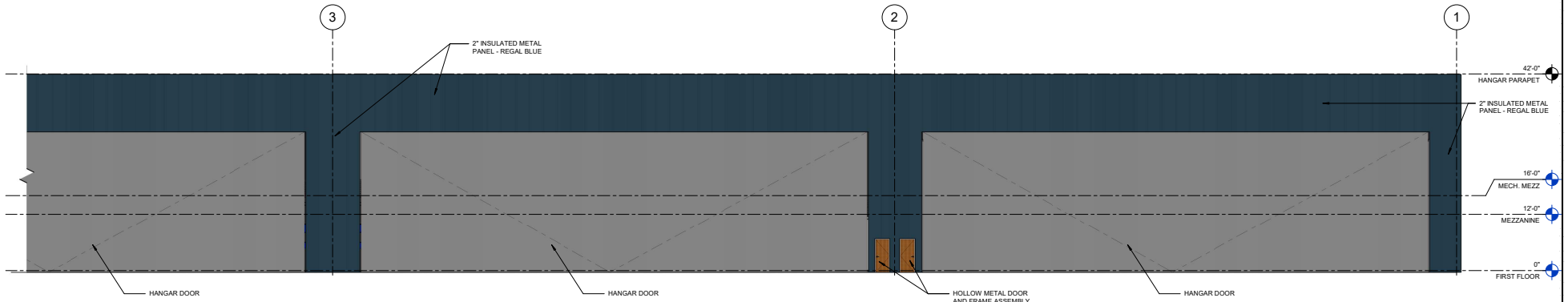
LOCATION	REQUIREMENT	TREES		SHRUBS	
		REQUIRED NUMBER	PROPOSED NUMBER	REQUIRED NUMBER	PROPOSED NUMBER
GREENFIELD ROAD	1 TREE AND 5 SHRUBS PER 30' OF STREET FRONTAGE	1300	43	44	215
E. MALLORY CIRCLE	1 TREE AND 5 SHRUBS PER 30' OF STREET FRONTAGE	2030	68	68	340
FOUNDATION BASE	1 TREE PER 30' OR LESS OF EXTERIOR WALL LENGTH, 2 TREES FOR EVERY BUILDING WITH STREET FACING FACADE	4370	146	96	730

CONCEPT STATEMENT
 The landscape design for the Falcon Field DEVCON development will accent the entry and main drive, blend the property frontage with the surrounding area, and develop the interior using several types of plant material that provide bold forms, textures, and color. Plant material selected for the site will be native desert or desert adapted to the area and will require minimal maintenance and water.

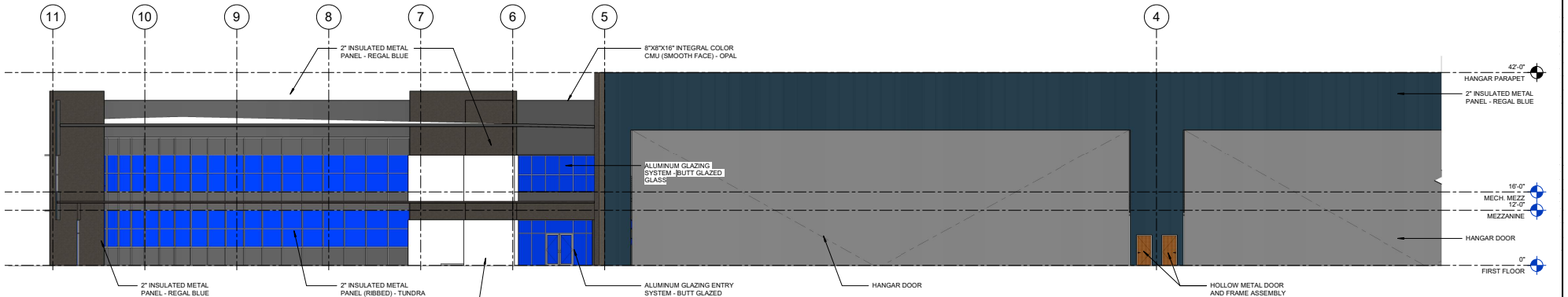
Site Entry
 The entrance to the development is highlighted by Date Palm groves on both sides of East Mallory Circle. Incorporated into the groves will be site signage for the development and locations for future art elements. Small groupings of Date Palms are located at the secondary entrances. The ground plane will include accent shrubs that will provide both texture and color. Decomposed granite will be used as a surface treatment. The varying gradations will provide a visual interest to the area. Up-Lighting will be used to accent the Date Palms and other selected trees. This will add interest to users of the site in the evening.

Site Interior
 Date Palms will line both sides of East Mallory Circle to approximately the north entrance to Building B. Informal groupings of shrubs will be placed between the Date Palms to provide texture and color. Parking lot islands will include canopy trees to provide shade and to also provide color and texture. Building foundations will include trees, shrubs, and accent plantings. Decomposed granite will be used in parking lot planter islands. Larger gradation decomposed granite will be used in the planters adjacent to the building.

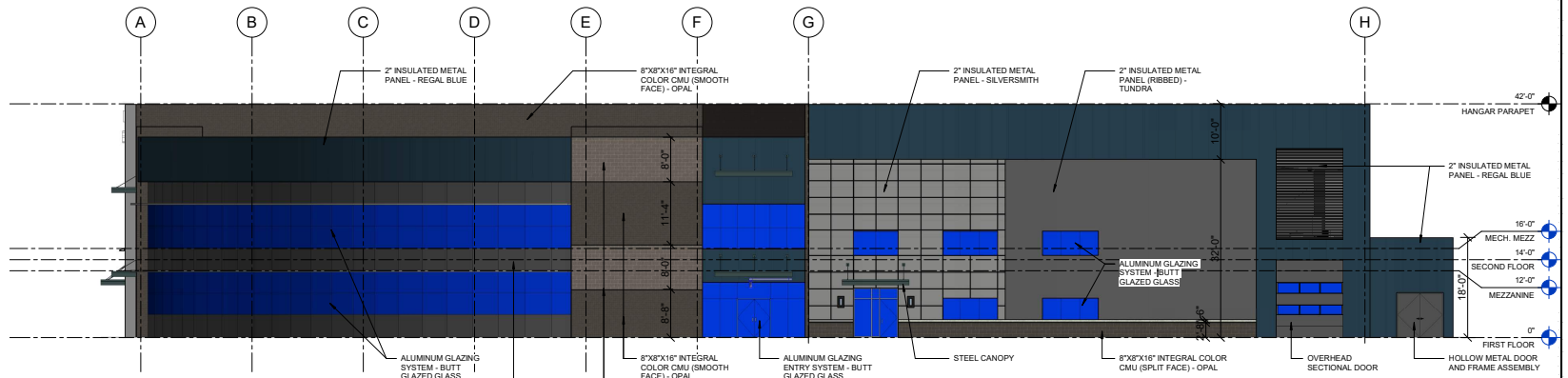
North Greenfield Road Frontage
 Plantings along North Greenfield Road are comprised of native and desert adapted trees, shrubs, and accent plantings. Trees are arranged so that sight corridors are provided to building signage. Shrub and accent plantings are grouped in informal arrangements to strengthen the formal plantings at the site entries. Boulder groupings will also be used in the landscape.



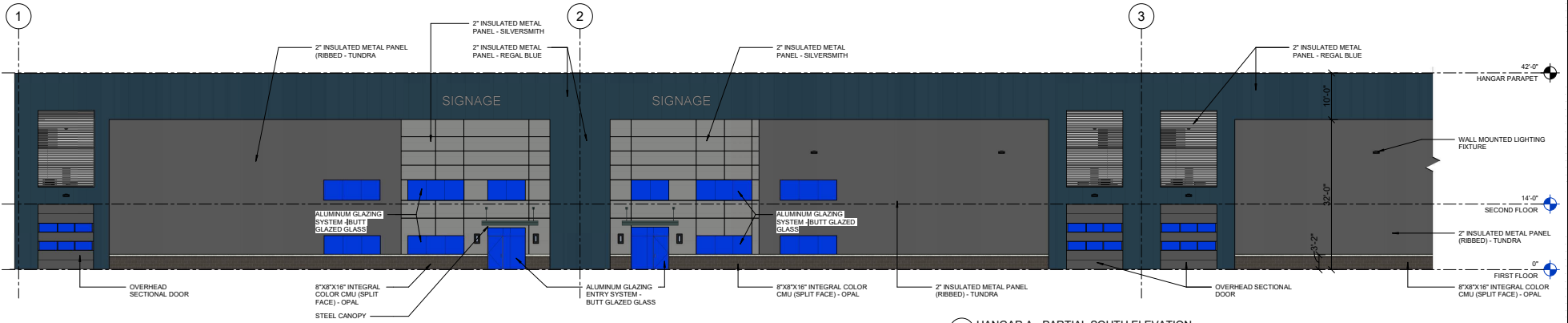
3 HANGAR A - PARTIAL NORTH ELEVATION
SCALE: 3/32" = 1'-0"



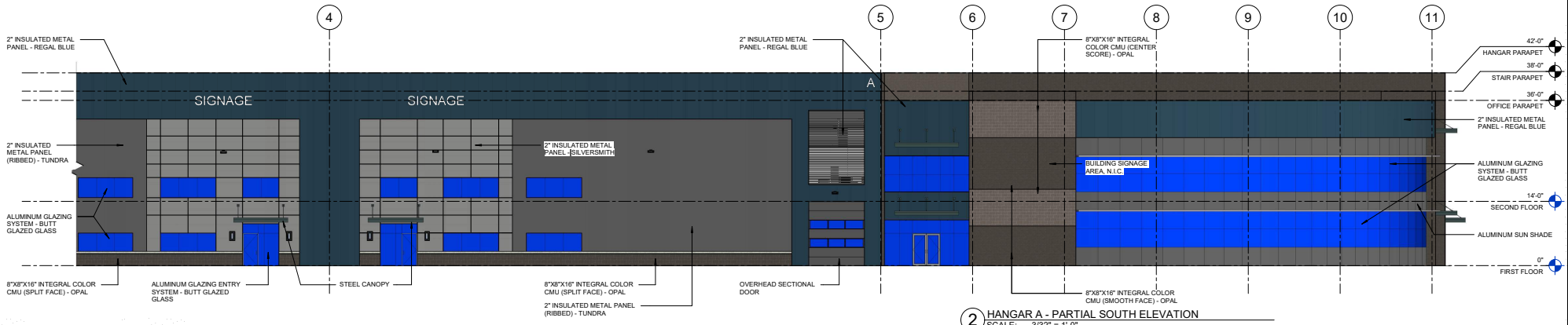
2 HANGAR A - PARTIAL NORTH ELEVATION
SCALE: 3/32" = 1'-0"



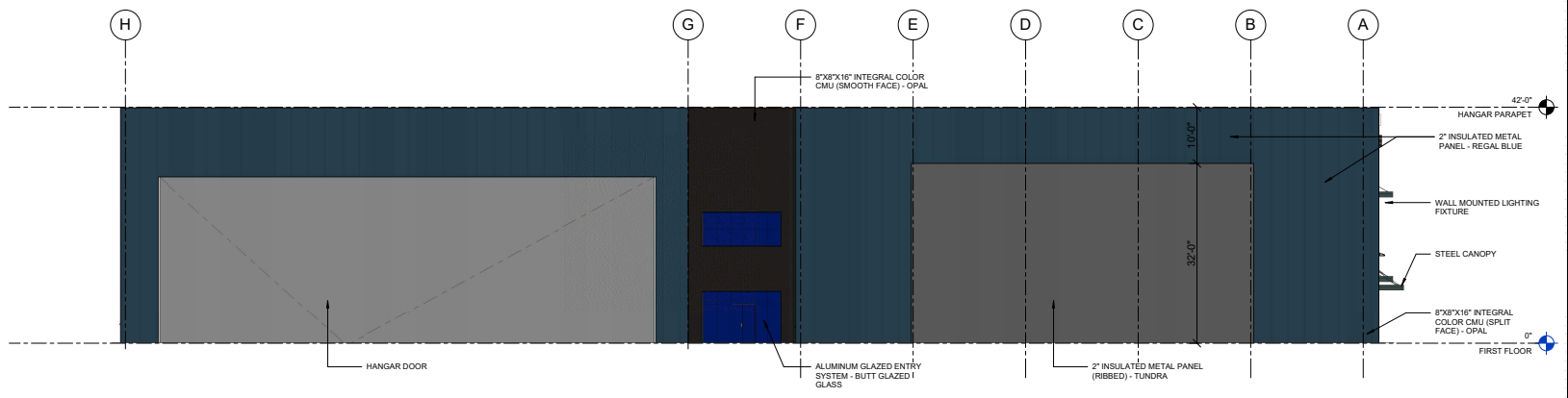
1 HANGAR A - EAST
SCALE: 3/32" = 1'-0"



3 HANGAR A - PARTIAL SOUTH ELEVATION
SCALE: 3/32" = 1'-0"



2 HANGAR A - PARTIAL SOUTH ELEVATION
SCALE: 3/32" = 1'-0"

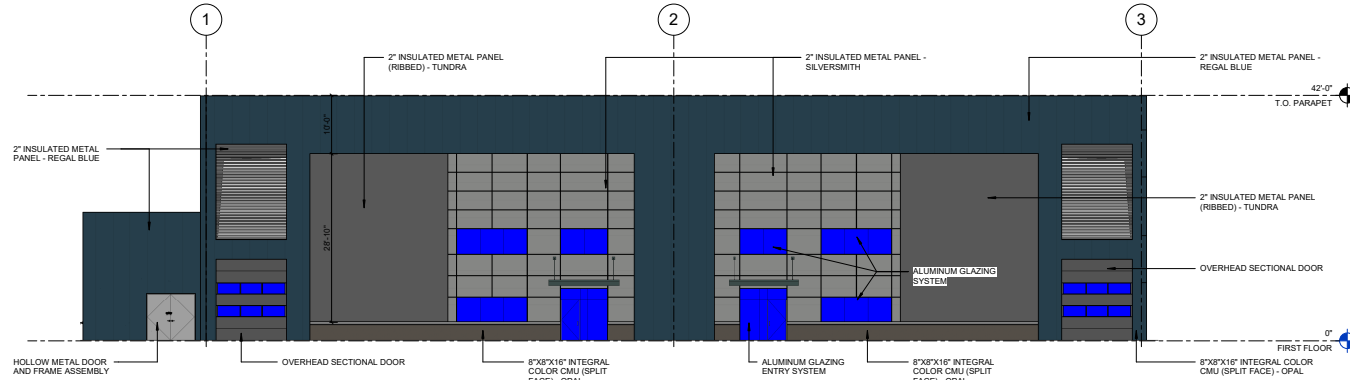


1 HANGAR A - WEST
SCALE: 3/32" = 1'-0"

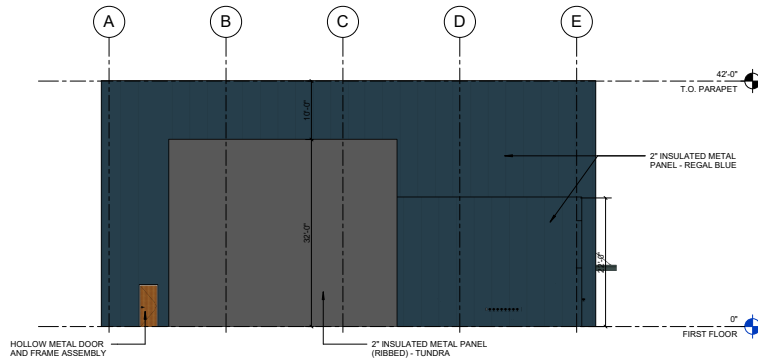
REVISION	DATE	DESCRIPTION

Project Number 71084-101	Date 1/23/19	Drawn By GHP	Checked By
-----------------------------	-----------------	-----------------	----------------

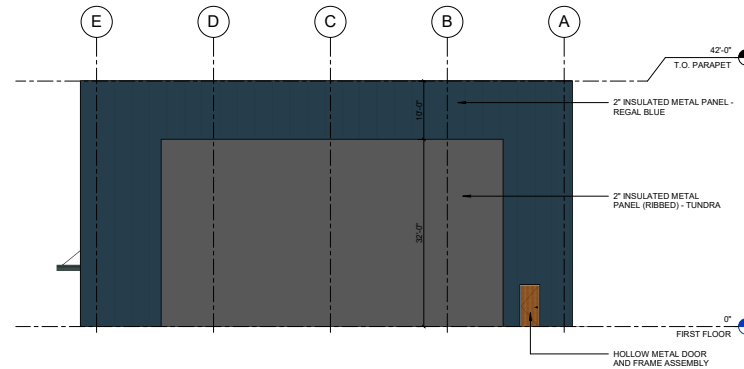
C:\Users\ashwin\OneDrive\Documents\71084-101 Hangar A_ADM\p01.mxd



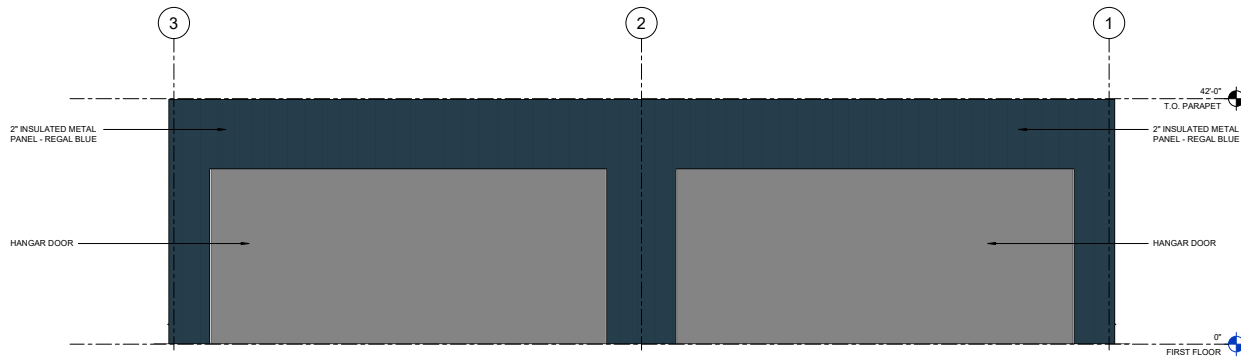
4 HANGAR B - SOUTH ELEVATION
SCALE: 3/32" = 1'-0"



3 HANGAR B - WEST ELEVATION
SCALE: 3/32" = 1'-0"



2 HANGAR B - EAST ELEVATION
SCALE: 3/32" = 1'-0"



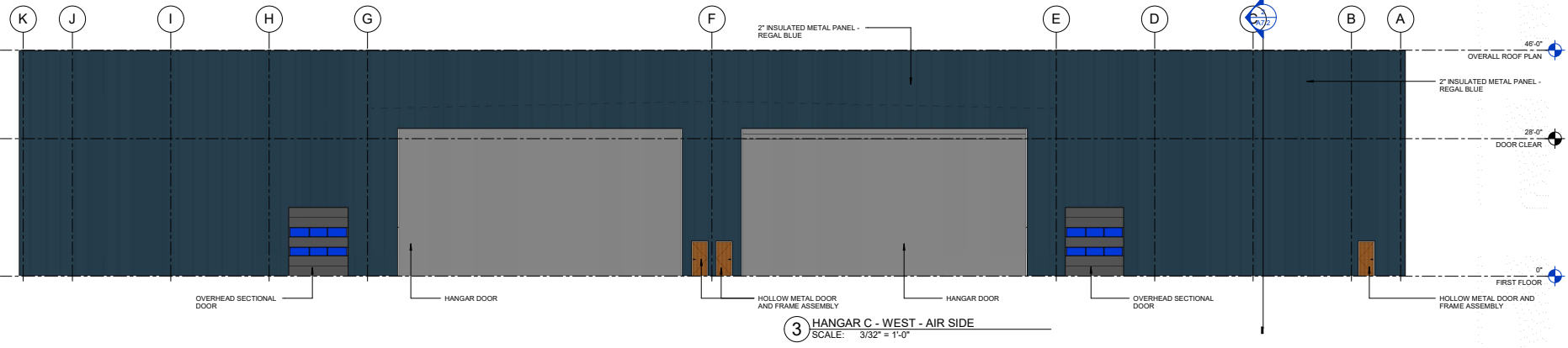
1 HANGAR B - NORTH ELEVATION
SCALE: 3/32" = 1'-0"

REVISION	DATE	DESCRIPTION

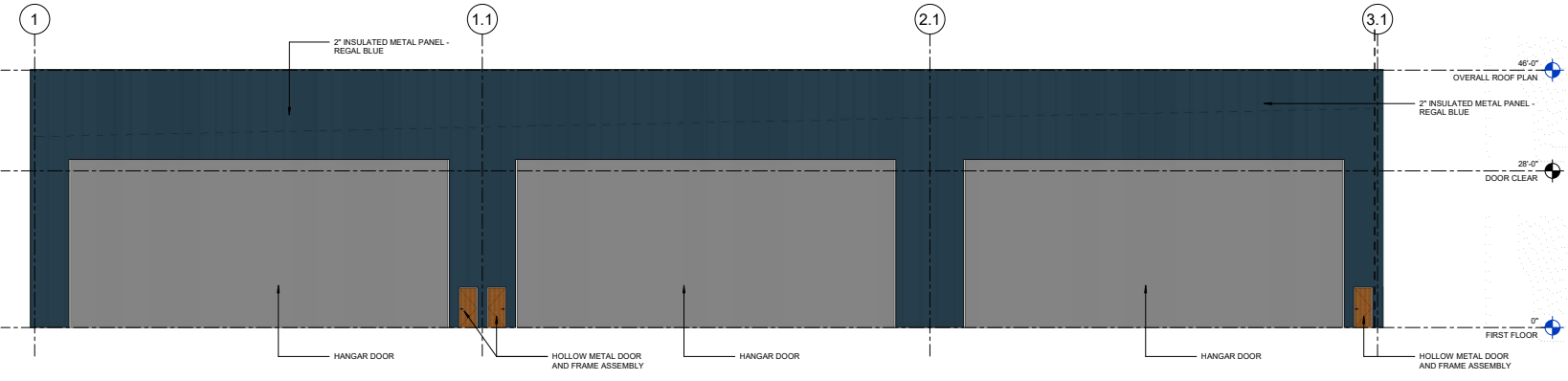
Project Number 7086-101	Date 1-23-19	Drawn By XX	Checked By XX
----------------------------	-----------------	----------------	------------------

EXTERIOR ELEVATIONS

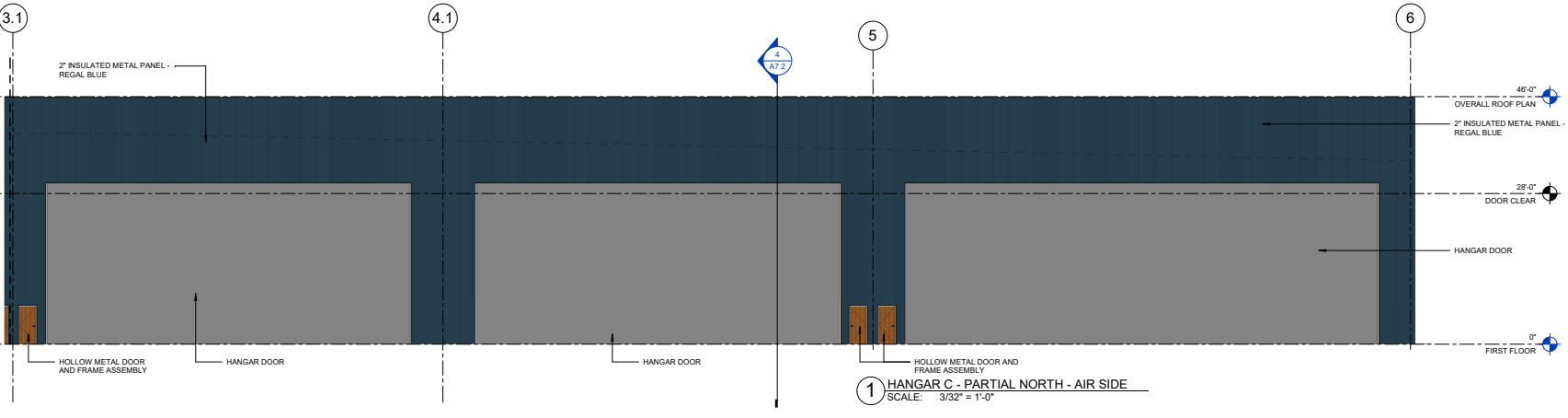
A6.2



3 HANGAR C - WEST - AIR SIDE
SCALE: 3/32" = 1'-0"



2 HANGAR C - PARTIAL NORTH - AIR SIDE
SCALE: 3/32" = 1'-0"



1 HANGAR C - PARTIAL NORTH - AIR SIDE
SCALE: 3/32" = 1'-0"

C:\engineering\external\bauphly\bauphly\bauphly\19\7036-101\Hangar C_A06\mgp\mch.rvt

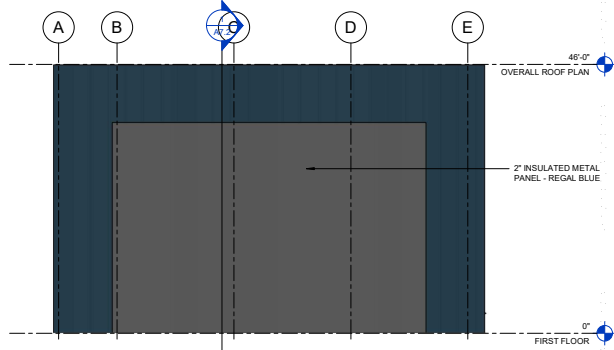


**MESA HANGARS AT
FALCON FIELD AIRPORT**
4800 EAST FALCON DR,
MESA, AZ 85215
HANGARS A,B,C,D,E,F

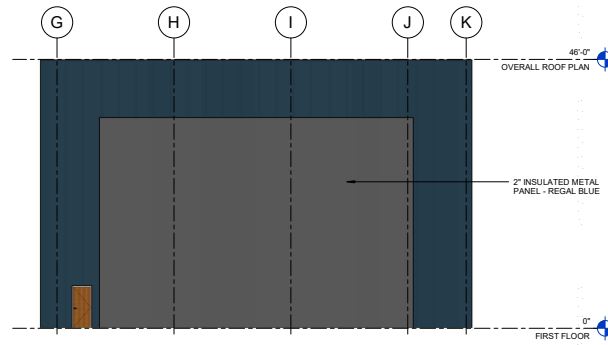
REVISION	DATE	DESCRIPTION

Project Number 7036-101	Date 10/20/19	Drawn By GMP	Checked By JF
----------------------------	------------------	-----------------	------------------

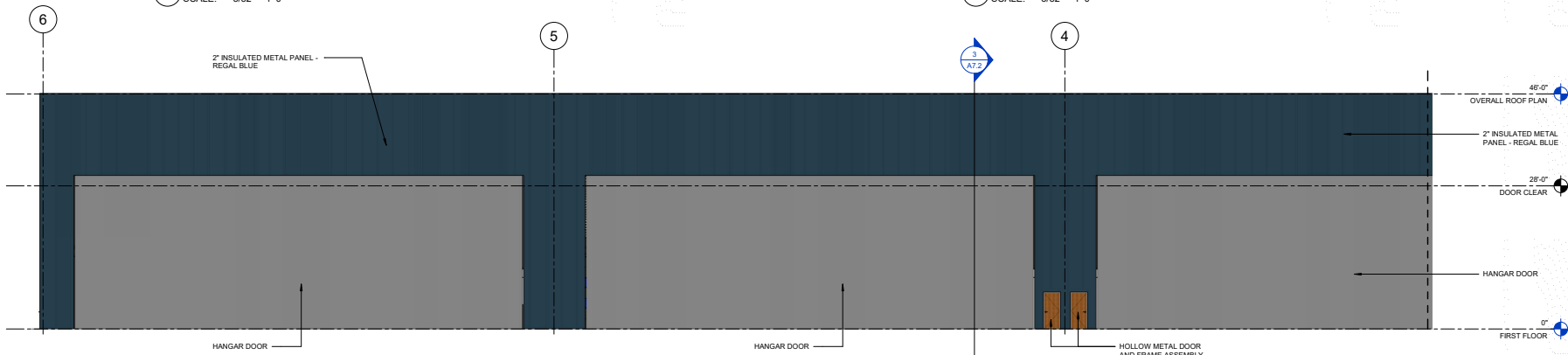
EXTERIOR ELEVATIONS
A6.2



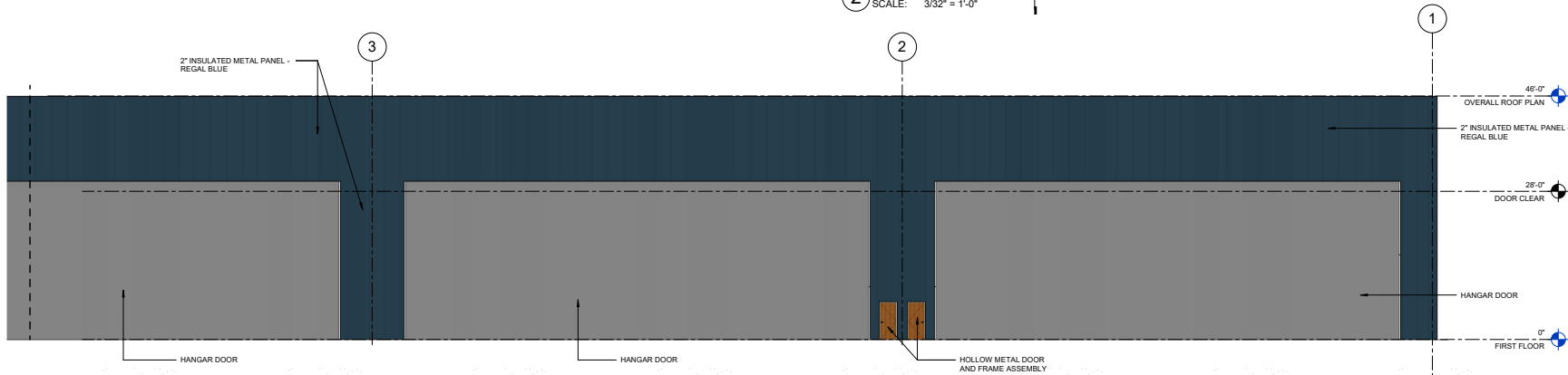
5 HANGAR C - PARTIAL EAST - LANDSIDE
SCALE: 3/32" = 1'-0"



4 HANGAR C - PARTIAL EAST - LANDSIDE
SCALE: 3/32" = 1'-0"



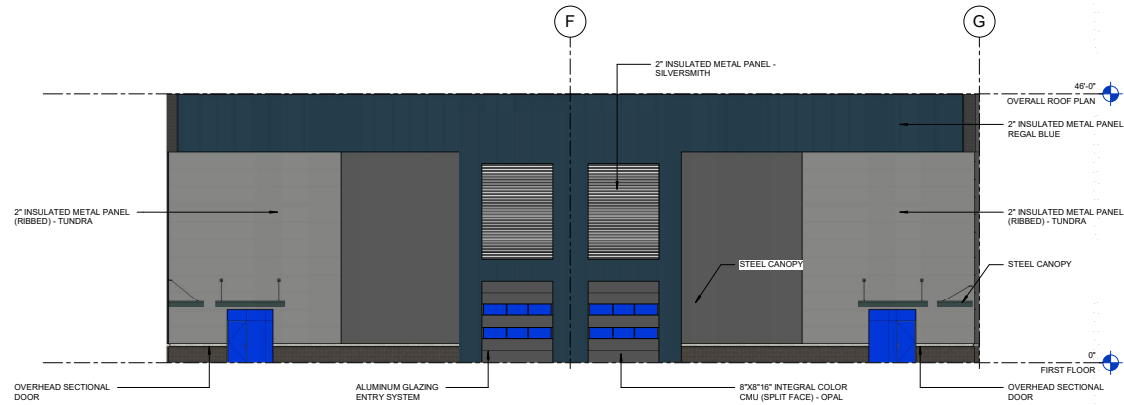
2 HANGAR C - PARTIAL SOUTH - AIR SIDE
SCALE: 3/32" = 1'-0"



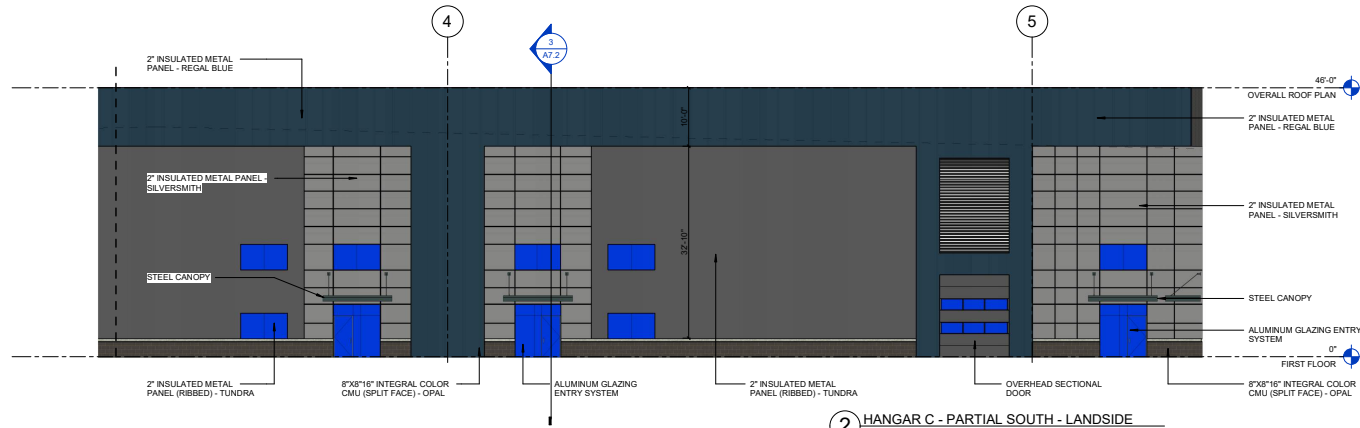
1 HANGAR C - PARTIAL SOUTH - AIR SIDE
SCALE: 3/32" = 1'-0"

REVISION	DATE	DESCRIPTION

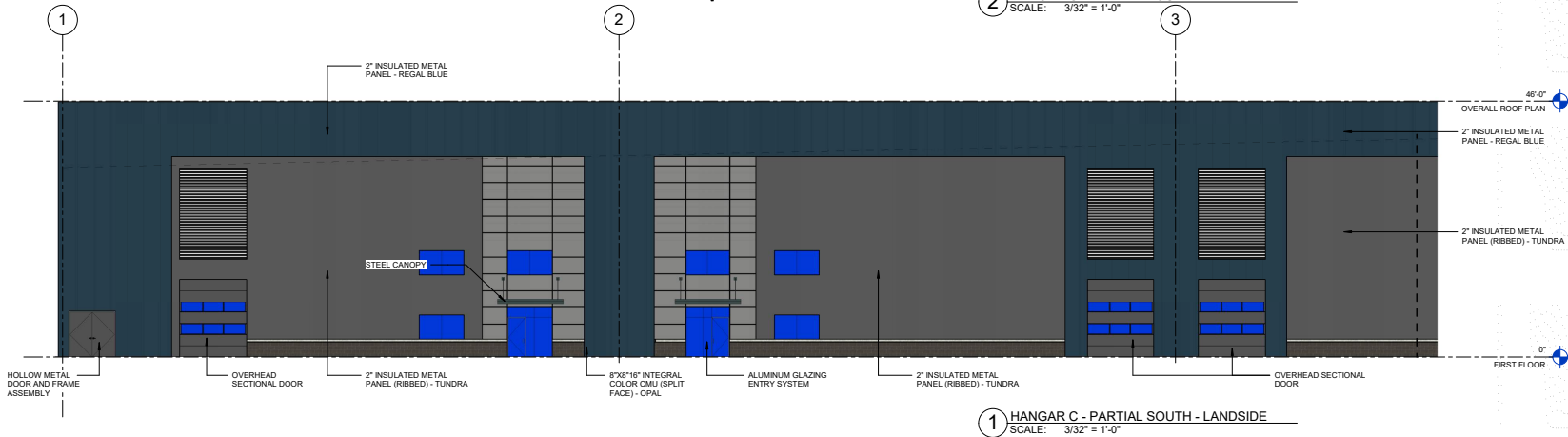
Project Number 7108-101	Date 1/20/19	Drawn By GHP	Checked By
----------------------------	-----------------	-----------------	----------------



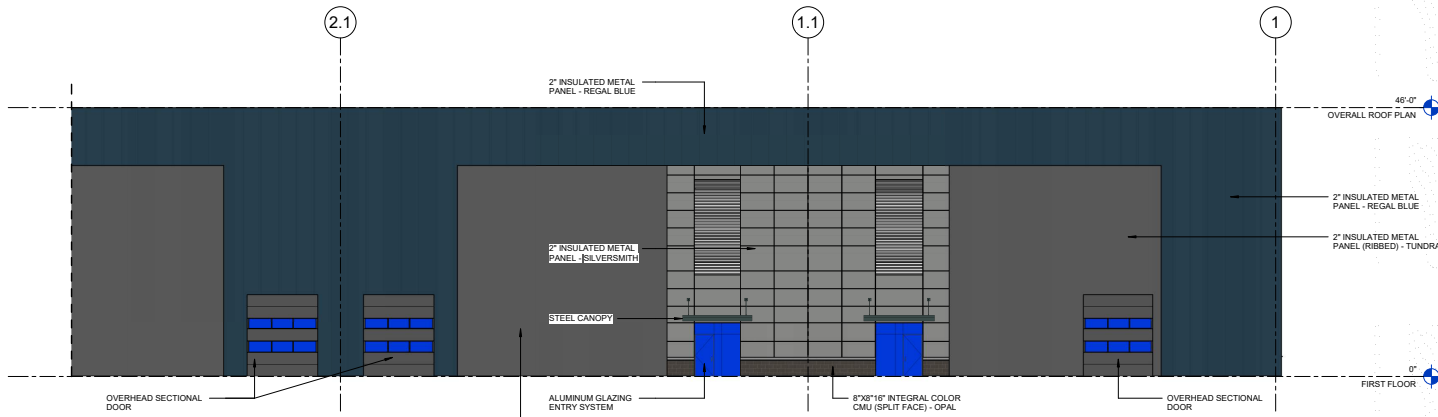
3 HANGAR C - EAST - LANDSIDE
SCALE: 3/32" = 1'-0"



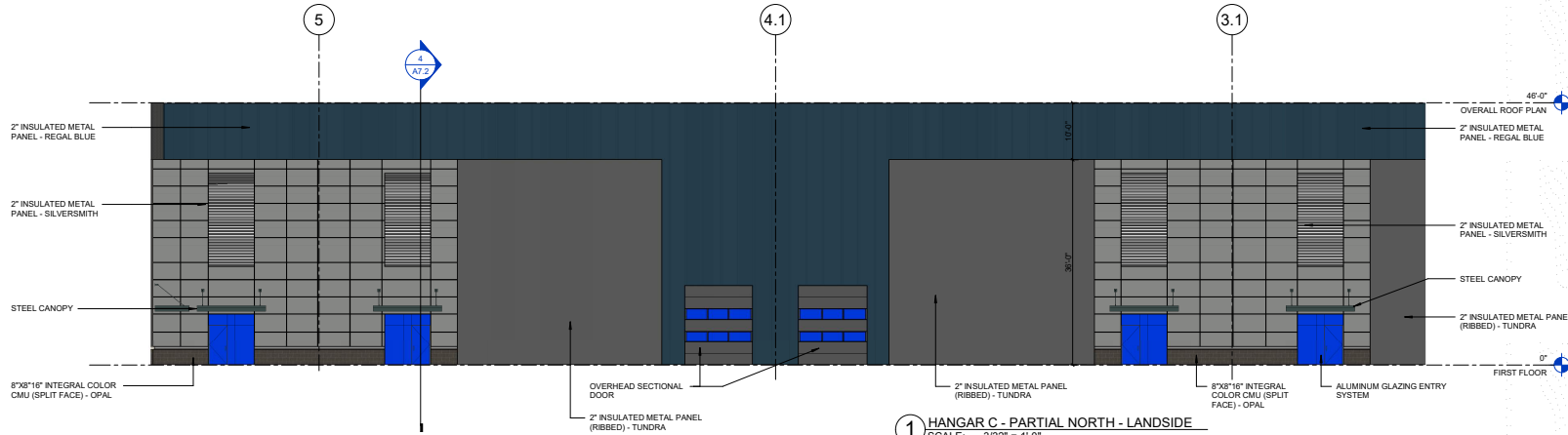
2 HANGAR C - PARTIAL SOUTH - LANDSIDE
SCALE: 3/32" = 1'-0"



1 HANGAR C - PARTIAL SOUTH - LANDSIDE
SCALE: 3/32" = 1'-0"



2 HANGAR C - PARTIAL NORTH - LANDSIDE
 SCALE: 3/32" = 1'-0"

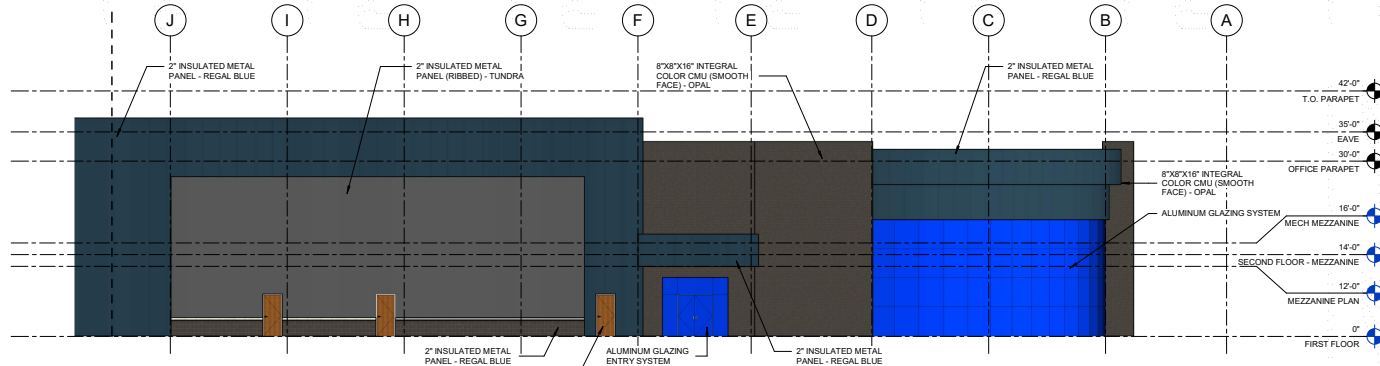


1 HANGAR C - PARTIAL NORTH - LANDSIDE
 SCALE: 3/32" = 1'-0"

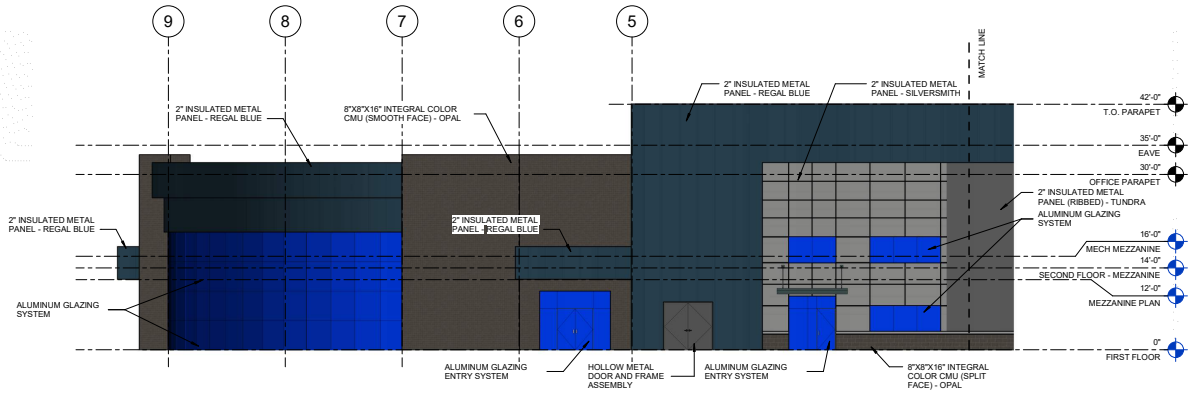
REVISION	DATE	DESCRIPTION

Project Number 71084-101	Date 10/20/19	Drawn By GHP	Checked By
-----------------------------	------------------	-----------------	----------------

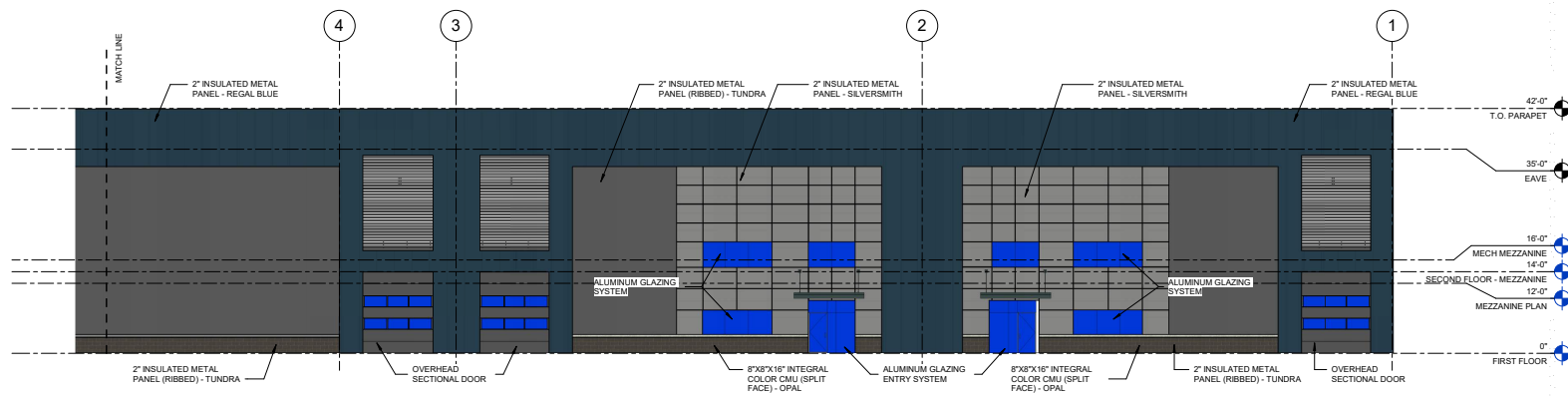
C:\Users\adm\OneDrive\Documents\Projects\71084-101 Hangar C_A6.dwg



3 HANGAR D - WEST ELEVATION
SCALE: 3/32" = 1'-0"



2 HANGAR D - PARTIAL SOUTH ELEVATION
SCALE: 3/32" = 1'-0"

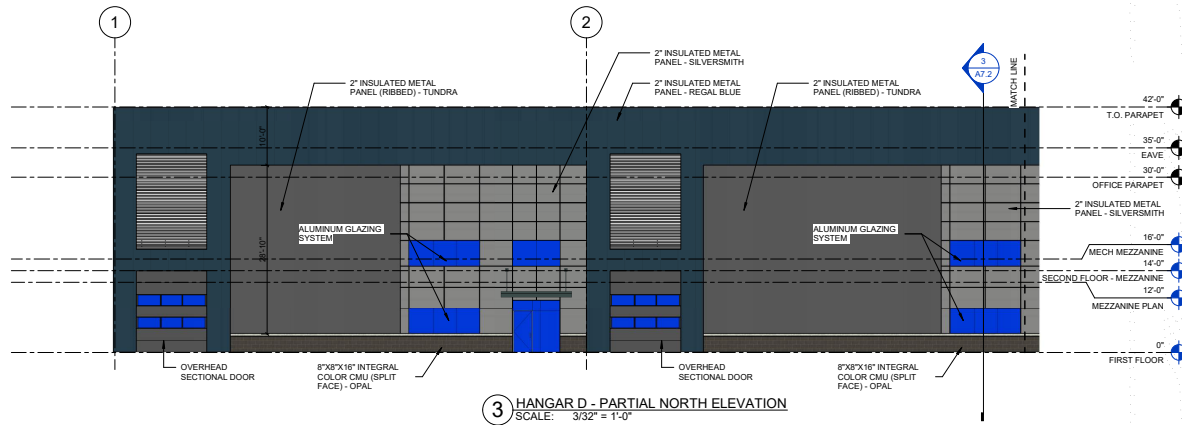


1 HANGAR D - PARTIAL SOUTH ELEVATION
SCALE: 3/32" = 1'-0"

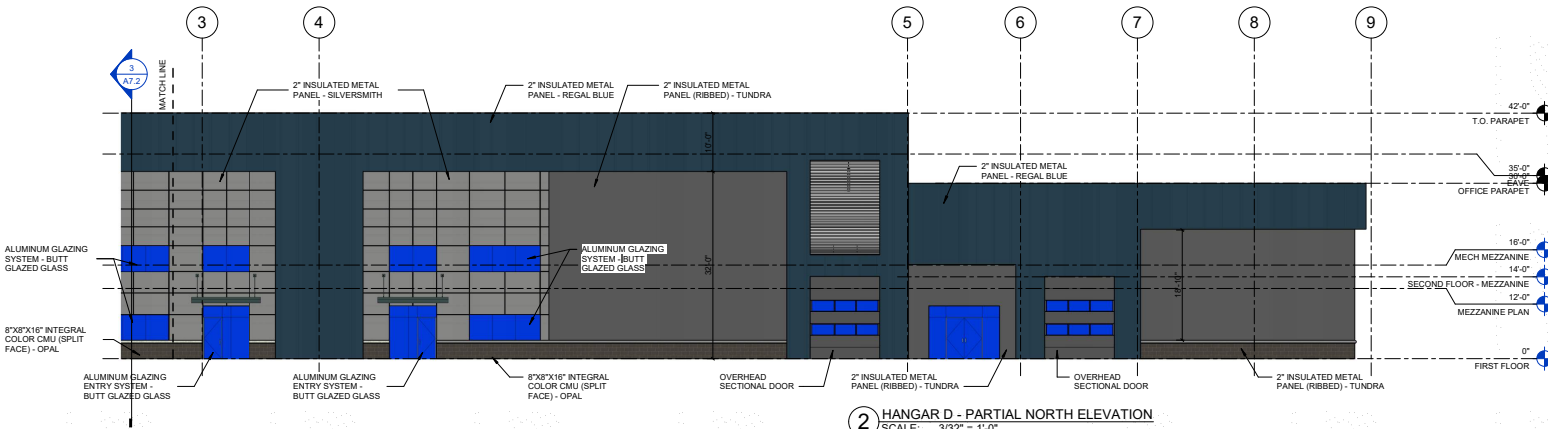
REVISION	DATE	DESCRIPTION

Project Number 71084-100	Date 1-23-19	Drawn By GMP	Checked By
-----------------------------	-----------------	-----------------	----------------

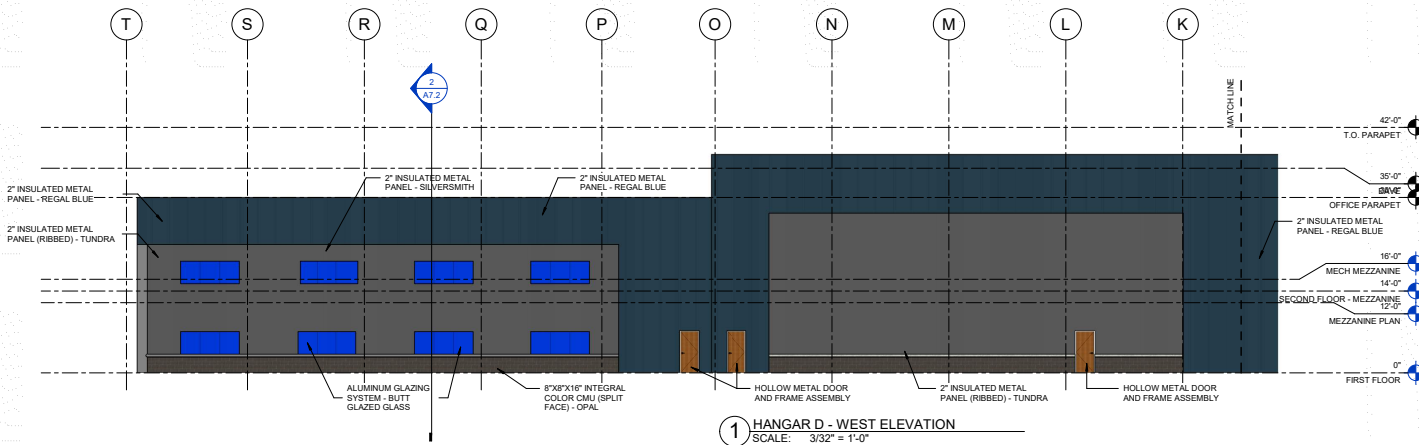
C:\engineering\external\bauplany Model\19\71084-101 Hangar D_A6.dwg



3 HANGAR D - PARTIAL NORTH ELEVATION
SCALE: 3/32" = 1'-0"



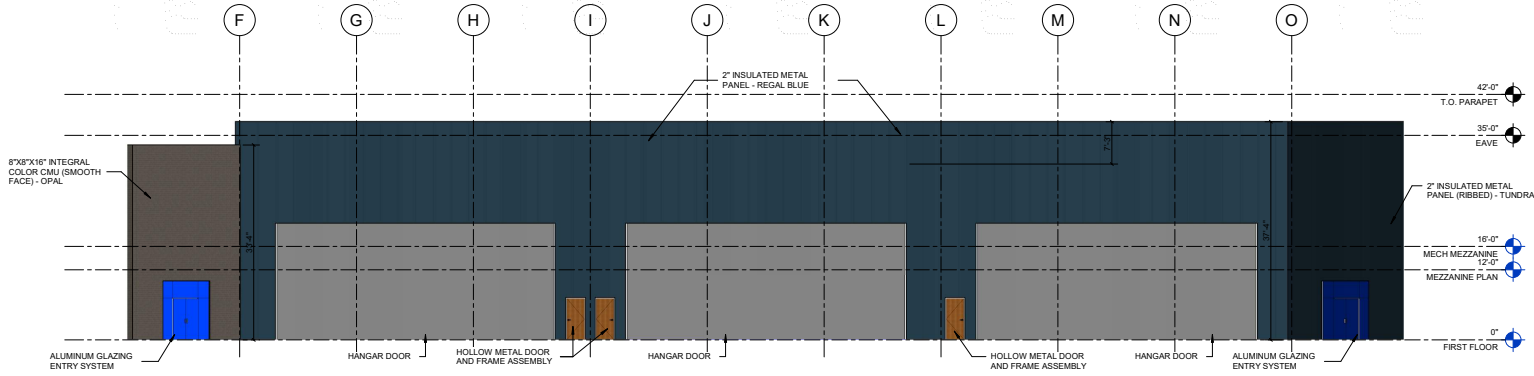
2 HANGAR D - PARTIAL NORTH ELEVATION
SCALE: 3/32" = 1'-0"



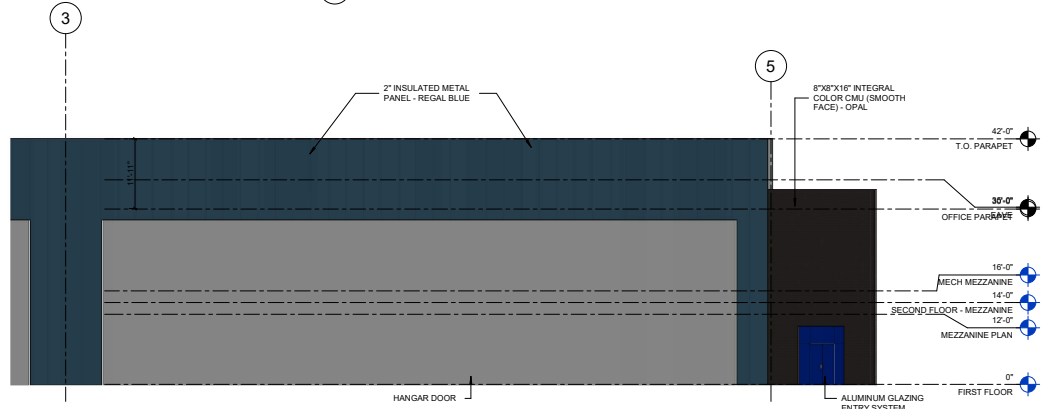
1 HANGAR D - WEST ELEVATION
SCALE: 3/32" = 1'-0"

REVISION	DATE	DESCRIPTION

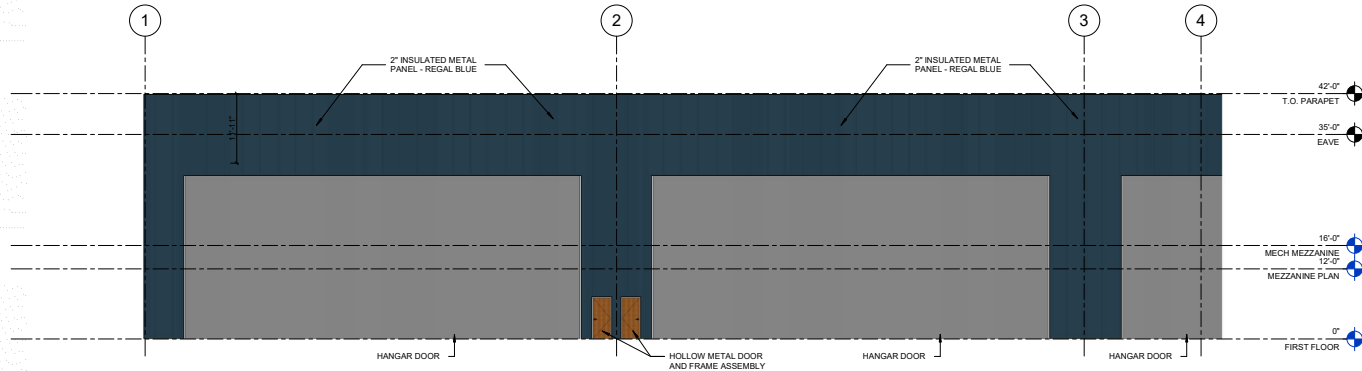
Project Number 71084-100	Date 1-23-19	Drawn By GHP	Checked By JF
-----------------------------	-----------------	-----------------	------------------



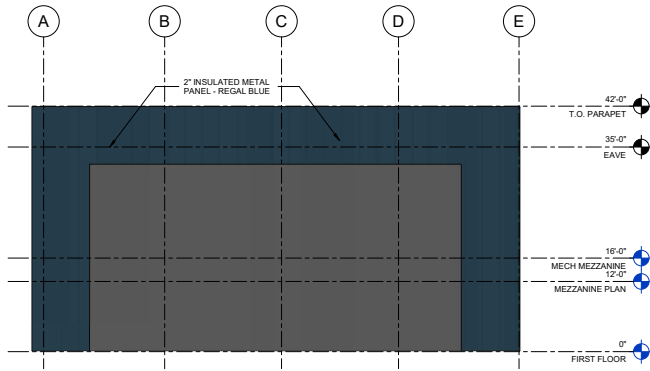
3 HANGAR D - EAST ELEVATION - AIR SIDE
SCALE: 3/32" = 1'-0"



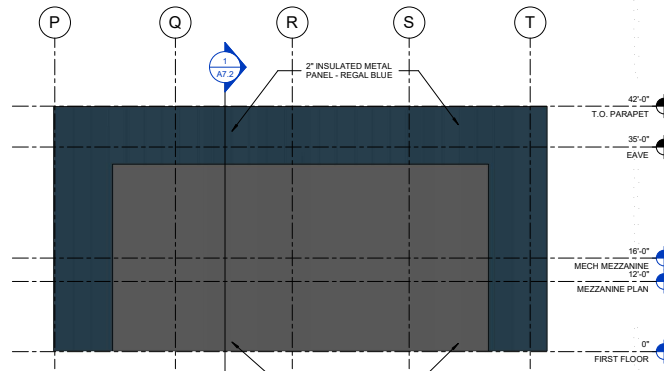
2 HANGAR D - PARTIAL NORTH ELEVATION - AIR SIDE
SCALE: 3/32" = 1'-0"



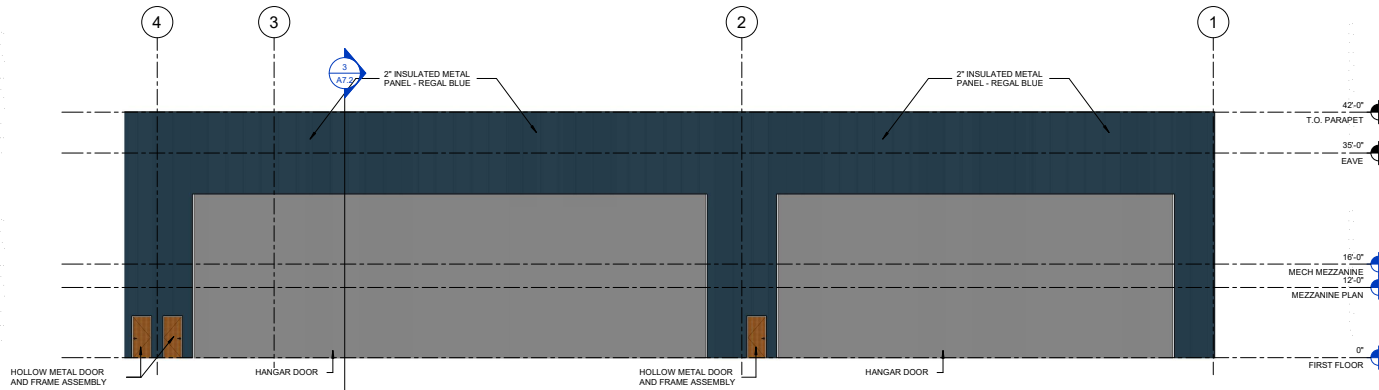
1 HANGAR D - PARTIAL NORTH ELEVATION - AIR SIDE
SCALE: 3/32" = 1'-0"



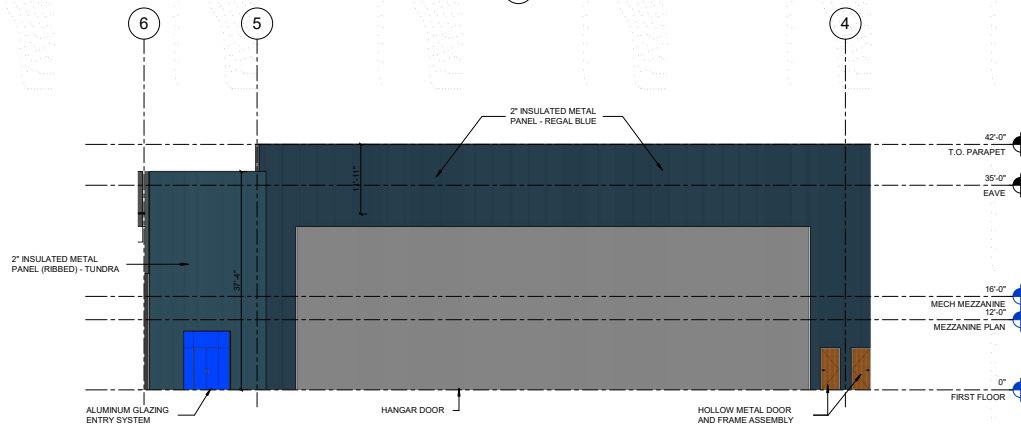
4 HANGAR D - EAST ELEVATION
SCALE: 3/32" = 1'-0"



3 HANGAR D - EAST ELEVATION
SCALE: 3/32" = 1'-0"



2 HANGAR D - PARTIAL SOUTH ELEVATION - AIR SIDE
SCALE: 3/32" = 1'-0"



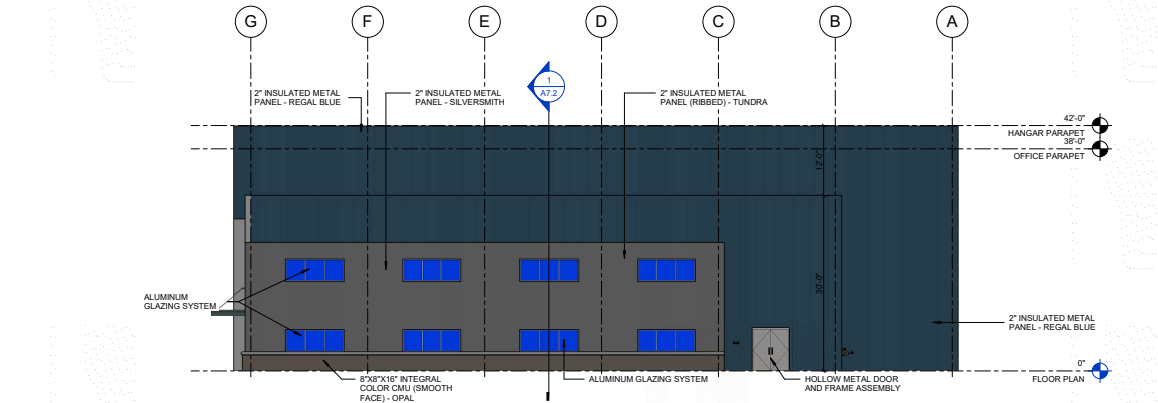
1 HANGAR D - PARTIAL SOUTH ELEVATION - AIR SIDE
SCALE: 3/32" = 1'-0"

C:\engineering\awson\develop\hanger\107036-101 Hanger D_A65group.rvt

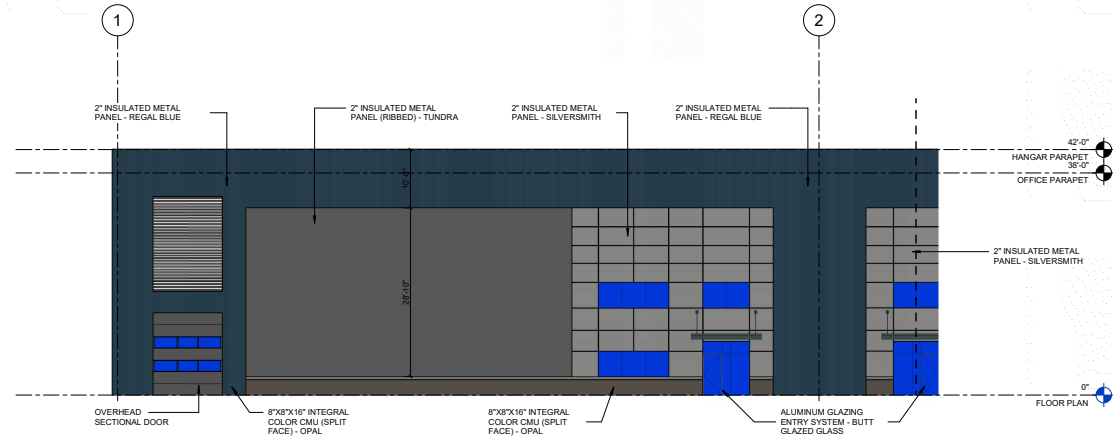
REVISION	DATE	DESCRIPTION

Project Number 71084-100	Date 1-23-19	Drawn By GHP	Checked By JF
-----------------------------	-----------------	-----------------	------------------

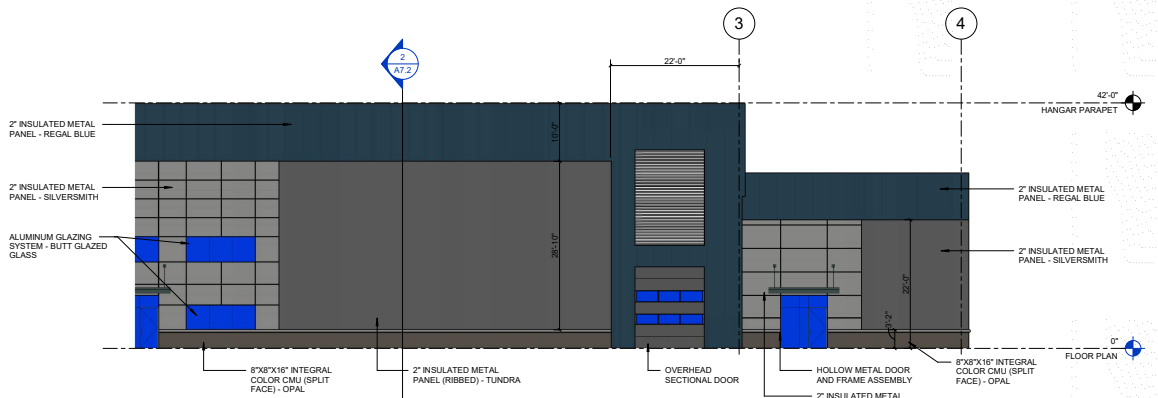
C:\engineering\dwg\assembly\hanger\19\7036-101 Hanger E_ADM.dwg



3 HANGAR E - WEST ELEVATION
SCALE: 3/32" = 1'-0"



2 HANGAR E - PARTIAL NORTH ELEVATION
SCALE: 3/32" = 1'-0"



1 HANGAR E - PARTIAL NORTH ELEVATION
SCALE: 3/32" = 1'-0"



**MESA HANGARS AT
FALCON FIELD AIRPORT**
4800 EAST FALCON DR,
MESA, AZ 85215
HANGARS A,B,C,D,E,F

REVISION	DATE	DESCRIPTION

Project Number
7036-102
Date
1-23-19
Drawn By
GMP
Checked By
JF

EXTERIOR ELEVATIONS

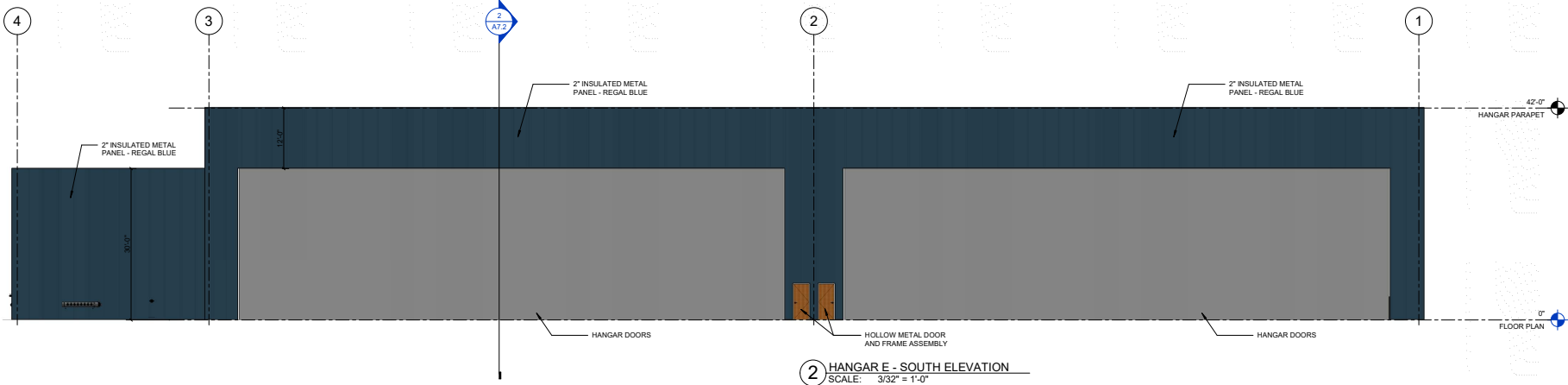
A6.2

REVISION	DATE	DESCRIPTION

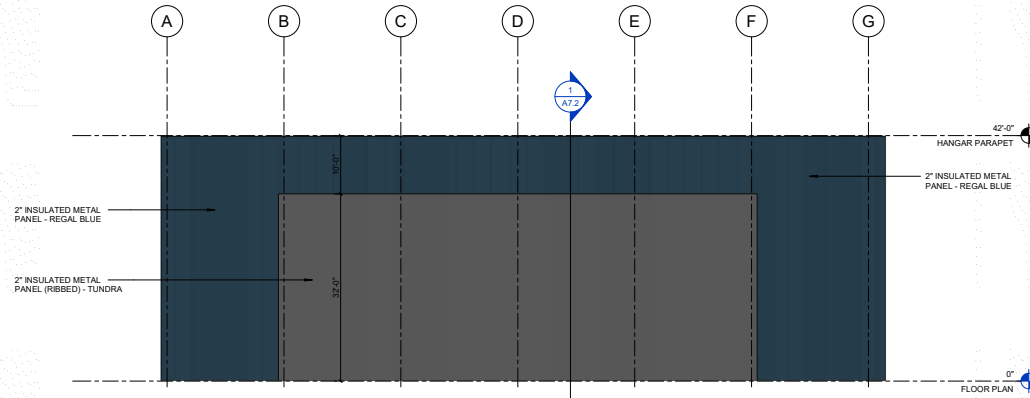
Project Number 71084-102	Date 12/01/19	Drawn By GHP	Checked By JF
-----------------------------	------------------	-----------------	------------------

EXTERIOR ELEVATIONS

A6.3



2 HANGAR E - SOUTH ELEVATION
 SCALE: 3/32" = 1'-0"



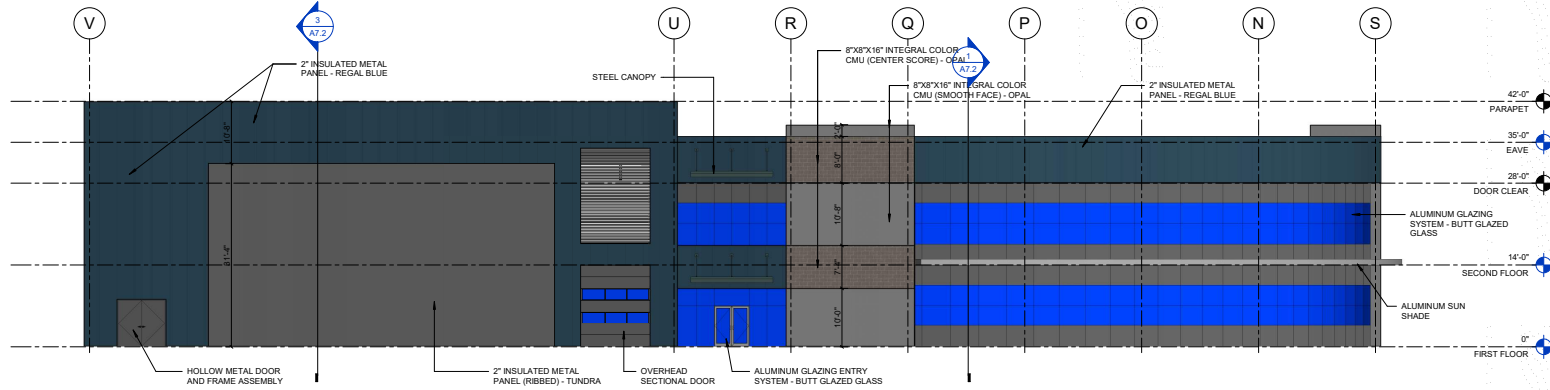
1 HANGAR E - EAST ELEVATION
 SCALE: 3/32" = 1'-0"

REVISION	DATE	DESCRIPTION

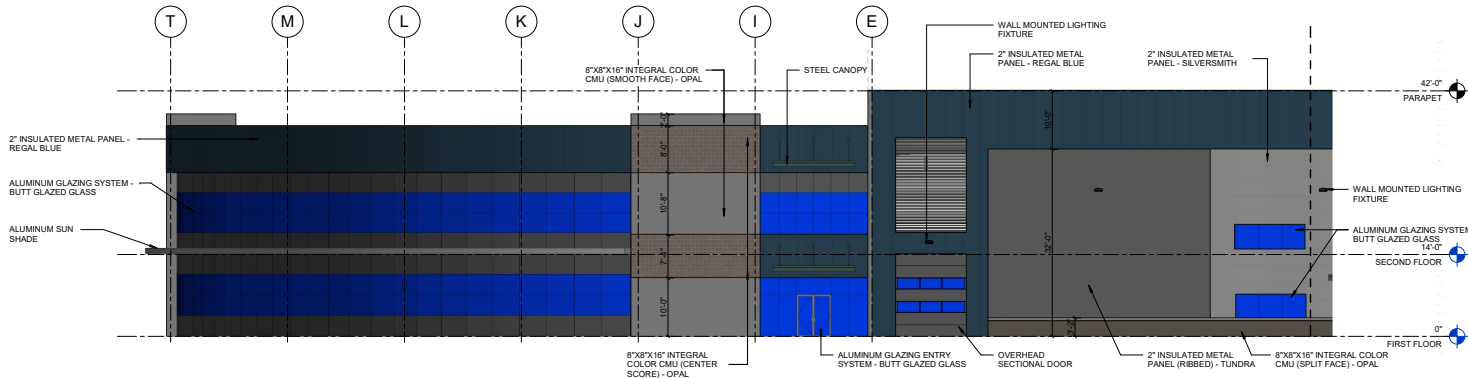
Project Number 710816-102	Date 1-23-19	Drawn By GHP	Checked By JF
------------------------------	-----------------	-----------------	------------------

EXTERIOR ELEVATIONS

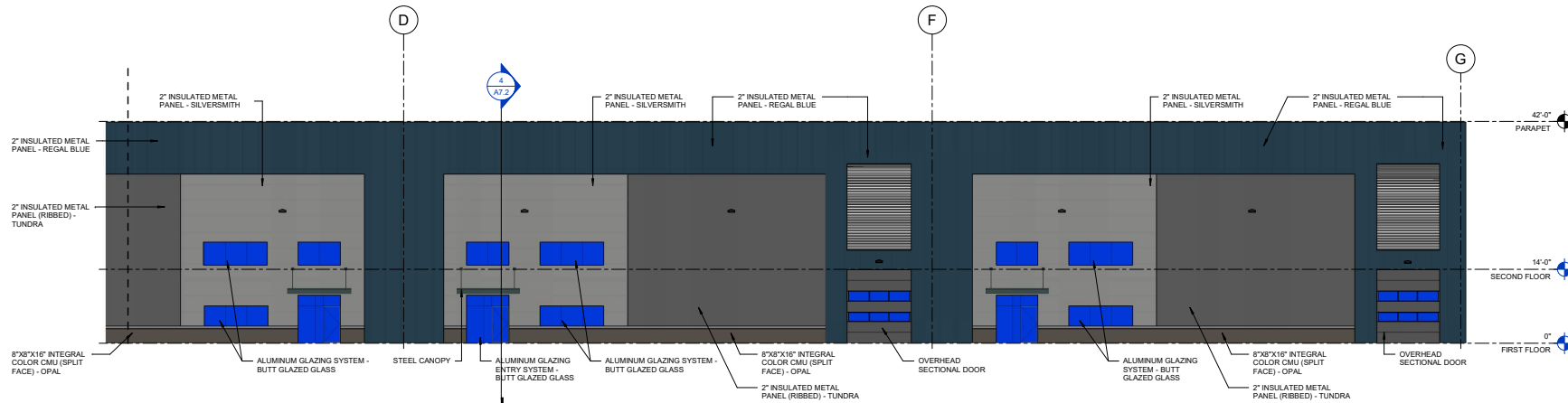
A6.2



3 HANGAR F - EAST - LANDSIDE
 SCALE: 3/32" = 1'-0"

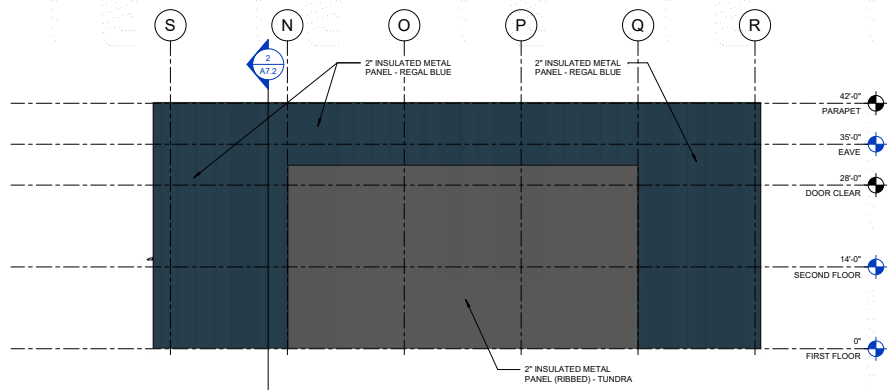


2 HANGAR F - PARTIAL SOUTH - LANDSIDE
 SCALE: 3/32" = 1'-0"

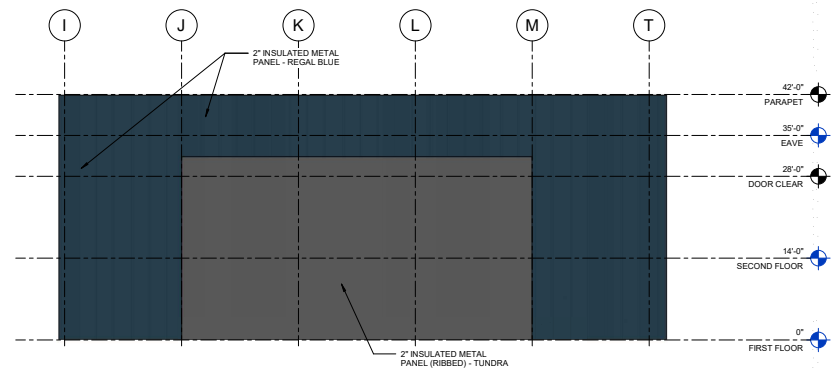


1 HANGAR F - PARTIAL SOUTH - LANDSIDE
 SCALE: 3/32" = 1'-0"

C:\Users\ashantson\Documents\A6.3\101 Hangar F_A03\magnon.rvt



2 HANGAR F - WEST - LANDSIDE
SCALE: 3/32" = 1'-0"



1 HANGAR F - NORTH - LANDSIDE
SCALE: 3/32" = 1'-0"

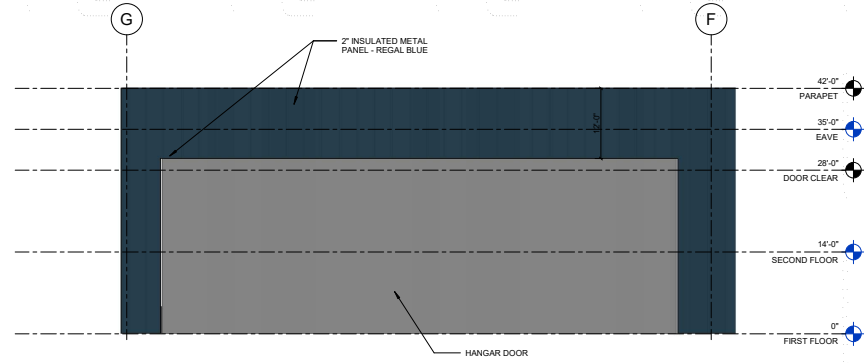


MESA HANGARS AT
FALCON FIELD AIRPORT
4800 EAST FALCON DR,
MESA, AZ 85215
HANGARS A,B,C,D,E,F

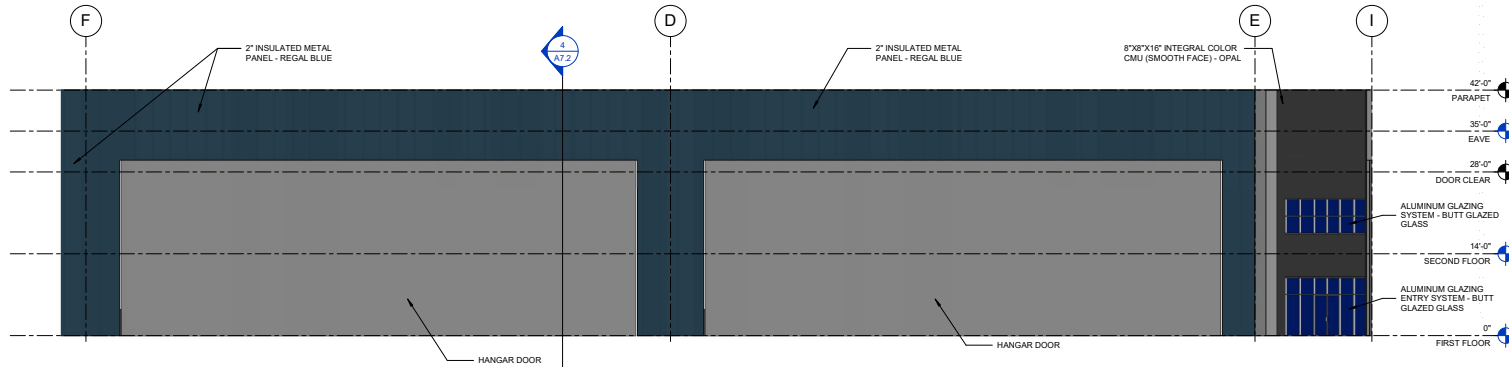
REVISION	DATE	DESCRIPTION

Project Number 7108-102	Date 1-23-19	Drawn By GMP	Checked By JF
----------------------------	-----------------	-----------------	------------------

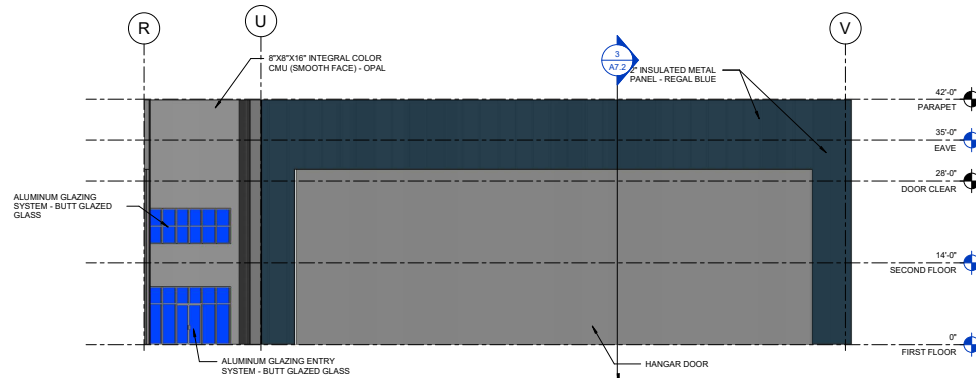
EXTERIOR ELEVATIONS
A6.3



3 HANGAR F - NORTH - AIR SIDE
SCALE: 3/32" = 1'-0"



2 HANGAR F - NORTH 1 - AIR SIDE
SCALE: 3/32" = 1'-0"

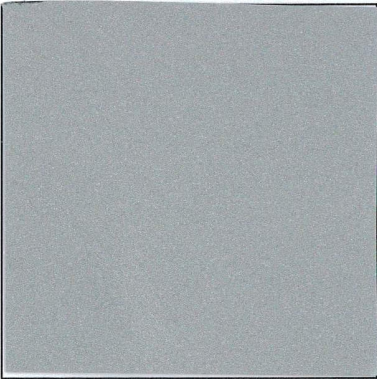


1 HANGAR F - WEST - AIR SIDE
SCALE: 3/32" = 1'-0"

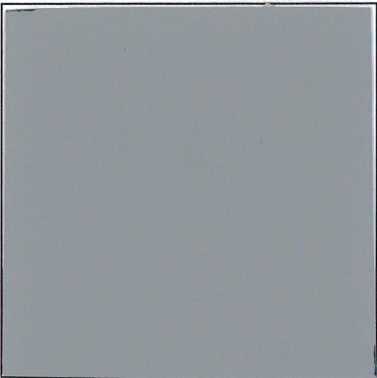
EXTERIOR MATERIAL BOARD FOR
MESA HANGAR LLC DEVELOPMENT



M-1 - 2" INSULATED METAL
PANEL - COLOR REGAL BLUE



M-2 - 2" INSULATED METAL
PANEL - COLOR SILVERSMITH



M-3 - 2" INSULATED METAL
PANEL (RIBBED) - TUNDRA



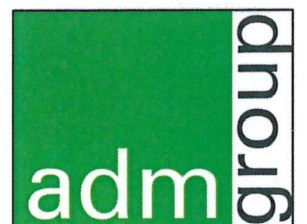
CMU-1 - 8X8X16 INTEGRAL COLOR
BLOCK, SPLIT FACE - COLOR OPAL

CMU-2 - 8X8X16 CENTER SCORE -
COLOR OPAL

CMU-3 - 8X8X16 INTEGRAL COLOR
BLOCK, SMOOTH FACE - COLOR
OPAL



P-1 - DUNN EDWARDS DE5860
SLUMBER





HANGAR F - NORTHWEST



HANGAR C - LANDSIDE



HANGAR E - NORTHEAST



HANGAR B - SOUTH



HANGAR D - NORTHWEST



HANGAR A - SOUTHWEST



MESA HANGARS AT
FALCON FIELD AIRPORT
4800 EAST FALCON DR,
MESA, AZ 85215
HANGARS A,B,C,D,E,F

REVISION	DATE	DESCRIPTION

Project Number 2708-101	Date 12/19/19	Drawn By GMP	Checked By JF
----------------------------	------------------	-----------------	------------------

Unnamed
AR1.0